



www.ambicapanel.com



Never Compromise In Quality
SINCE 2011



PRICE LIST

WITH PRODUCT DETAIL

EFFECTIVE DATE: 01.04.2024

Ambica Panel: The Leading Manufacturer
Of Agricultural Domestic And Industrial Panels.



Ambica Panels: Where Quality Meets Efficiency.



COMPANY PROFILE:

AMBICA PANEL Has Been Associated With "high Quality" And "customer Satisfaction" Since Its Inception. Our Company Is Passionate And Dedicated To Providing Its Customers With "value For Their Money." "customer First" Has Been The Core Policy Of The Company, Which Is Why The Company Has Grown Rapidly In A Short Span Of Time And Emerged As One Of The Leading Companies In India. Today, We Are Proud That Our Customers Have Become Our Ambassadors Due To Our Quality Products, Which Has Led To AMBICA PANEL Becoming A Household Name. Our Company Has Achieved Excellence By Focusing On "quality," "efficient Service," And "working On Customers' Feedback," Collectively Making AMBICA PANEL One Of The Best Brands And Moving In The Direction Of Becoming A Global Leader.

OUR VISION

Ambica Electricals Aims To Be A Leading Provider Of Electrical Panels, Delivering Innovative Solutions And Superior Quality Products To Our Valued Customers."

OUR MISSION

Ambica Electricals is committed to designing and manufacturing top-quality electrical panels, catering to the diverse needs of our clients while upholding the highest standards of safety, efficiency, and reliability."

OUR TECHNOLOGY

Ambica Panel has played a leading role in proactively advancing the electrical sector in the country. In order to build a sustainable future for India, the company has been collaboratively working on various electric products and solutions."

INDEX

Three Phase DOL Electricals Panel

Page no

1. AMK-1 Dol Starters AEC-101-BK1	1
2. AMK-1 Dol Starters AEC-102-DM1	1
3. AMU G-6 Dol Starters AEC-103-G6	1
4. Dol Submersible Pump Panel AEC-104-ACH	2
5. AMU G-10 Dol Starters AEC-105-G10	2
6. DOL Panel Without MCCB AEC-106-DOL	2
7. Mccb DOL Panel AEC-107-DOL	3
8. 2IN1 Tow & Three Phase Dol Panel AEC-108-2IN1	3

Three Phase SMART DOL Electricals Panel

9. Smart Digital Three phase Dol Panel AEC-201-Dol	4
10. Smart Digital DOL Panel Without MCCB AEC-202-DOL	4
11. Smart Digital Mccb DOL Panel AEC-203-DOL	5

Three Phase STAR DELTA ,ATS STAR DELTA Electricals Panel

12. AMU G-15 FASD Fully Automatic Star Delta Starters AEC-301-G15	6
13. AMU G-20 FASD Fully Automatic Star Delta Starters AEC-302-G20	6
14. Without MCCB Star Delta Panel AEC-303-ESD	6
15. Without MCCB Star Delta Panel AEC-304-WSD	7
16. Without MCCB Star Delta Panel AEC-305-WHSD HEAVY DUTY CLASS-1	7
17. MCCB Star Delta Panel AEC-306-SD	7
18. MCCB Star Delta Panel AEC-307-HSD HEAVY DUTY CLASS-1	8
19. ATS Star Delta Mccb Panel AEC-308-ATS	8

Three Phase SMART STAR DELTA ,ATS STAR DELTA Electricals Panel

20. Smart Digital Star delta Panel AEC-501-WSD	9
21. Smart Digital Without MCCB Star Delta Panel AEC-502-WSD	9
22. Smart Digital Without MCCB Star Delta Panel AEC-503-WHSD HEAVY DUTY CLASS-1	10
23. Smart Digital MCCB Star Delta Panel AEC-504-SD	10
24. Smart Digital MCCB Star Delta Panel AEC-505-HSD HEAVY DUTY CLASS-1	11
25. Smart Digital ATS Star Delta Mccb Panel AEC-506-ATS	11

SINGLE PHASE Electricals Panel

26. Single phase Submersible Pump Starters AEC-601-AT	16
27. Single phase Submersible Pump Starters AEC-602-DT	16
28. Single phase Submersible Pump Starters AEC-603	16
29. Single phase Submersible Pump Starters AEC-604	17
30. Single phase Submersible Pump Starters AEC-605	17
31. Single phase Submersible Pump Starters AEC-606	17
32. Single phase Heavy Submersible Pump Starters AEC-607-HSI	18
33. Two phase Submersible Pump Starters AEC-608-TDA	18
34. Single phase Starters AMU-2P AEC-609-PN	18
35. Two phase Starters AMU-P2P AEC-610-P2P	19
36. AMK-1 Single phase Starters AEC-611-BK1	19
37. AMK-1 Single phase Starters AEC-612-DM1	19

SMART SINGLE PHASE Electricals Panel

38. Smart digital Single phase Pump Starters With Auto+WLC AEC-701-SI	20
39. Smart digital Two phase Pump Starters With Auto+WLC AEC-702-T2	20
40. Smart digital Single phase Pump Starters With Auto+WLC AEC-703-WS	20
41. Smart digital Single phase Pump Starters With Auto AEC-704-PN	21
42. Smart digital Two phase Pump Starters With Auto AEC-705-P2P	21

DOL-STAR DELTA Industrial Electricals Panel

43. AMU DOL Starters AEC-751-AMU	24
44. AMU Without Meter Dol Starters AEC-752-AUT	24
44. Three Phase DOL Starters AEC-753-LC1	24
45. AMU SASD Semi Automatic Star Delta AEC-754-SASD	24
46. AMU SASD Fully Automatic Star Delta AEC-755-FASD	25
47. Star delta panel AEC-756-SDT	25
48. Smart Digital Star delta panel AEC-757-SDM	25

ZEN DOMESTIC THREE PHASE Electricals Panel

50. Three phase DMK-1 DOL AEC-801-DMK	27
51. Three phase Pump Starter With Analog Mcb+Relay AEC-802-DOL	27
52. Three phase Pump Starter With Digital Meter Mcb+Relay AEC-803-DOL	27
53. hree phase Pump Starter With Autoswitch+Relay AEC-804-DOL	27

ZEN DOMESTIC SINGLE PHASE Electricals Panel

54. Regular Openwell Pump Starter Without Meter AEC-901-RO	28
55. Regular Openwell Pump Starter Without Meter AEC-902-PRO	28
56. Openwell Pump Starter With Amp Meter AEC-903-RO	28
57. Openwell Pump Starter With Analog Meter & Mcb AEC-904-AO	29
58. Openwell Pump Starter Digital Meter & Mcb AEC-905-DO	29
59. Single phase Pump Starter Analog Meter & Mcb AEC-906-ACH	29
60. Single phase Pump Starter Analog Meter & Mcb AEC-907-PCH	30
61. Single phase Pump Starter With Digital meter & Mcb AEC-908-DM	30
62. Single phase Pump Starter With Analog meter & Relay AEC-909-AR	30
63. Single phase Pump Starter With Digital meter & Relay AEC-910-DR	31



Never Compromise In Quality



Agricultural Electrical Panel



- R, Y, B Ampere Meter, R, Y, B Volt Meter.
- High Voltage & Low Voltage Protection.
- Overload Protection.
- AC Contactor operated Fast Switching,
- Phase Failure Protection.
- Reverse phase protection.
- Adjustable Overload Setting.
- Soft Start/ Stop Buttons.
- One million Operation mechanical life.
- Adjustable Auto Start and Bypass Function.
- Automatic/ Manual Operation.
- Noise-& Vibration Free-Operation.
- Low Maintenance on Mechanical Equipment.
- Designed to Operate -20°C to 65°C Temperature.
- Simple Construction and Wiring.





Never Compromise In Quality

"Now Your motor
in safe hands."

smart

Digital Panel



गर्मी और ठंड के मौसम में भी बेहतर प्रदर्शन.



डिजिटल mpd के साथ अधिक सुरक्षा और बेहतर प्रदर्शन.



100000 संचालन यांत्रिक जीवन



आवाज एवं कंपन रहित



सुविधाजनक Dry-Run विशेषता



अधिक लोड के लिए सक्षम



तकनीकी समस्या पर code error बताए



सुरक्षित मोटर विश्वसनीयता



जल स्तर संकेत के साथ

अंबिका इलेक्ट्रिकल्स एक उन्नत माइक्रो कंट्रोलर तकनीक पर आधारित सबसे बुद्धिमान स्मार्ट कंट्रोल पैनल प्रस्तुत करता है।

अंबिका इलेक्ट्रिकल्स पैनल सिंगल फेज में 1 HP से 5 HP तक और त्रि फेज में 1- HP से 400 HP तक के मोटरों की सुरक्षा के लिए उपलब्ध हैं। ये पैनल मोटर के शुरुआती करंट और विद्युत तनाव को अनुकूलित करके आपके मोटर के जीवन को विस्तारित करते हैं। अंबिका पैनल के साथ आपके मोटर को सुरक्षित रखने के साथ-साथ, हम प्रामाणिक अनुभव भी प्रदान करते हैं, जो हमारे उत्पादों की गुणवत्ता और विश्वसनीयता को सुनिश्चित करता है।



AMK-1 Dol Starters AEC-101-BK1

Features

- Voltage: Three Phase 280 V to 415 V AC 50Hz.
- Amk1/2 type contactor Used up to 12.5 hp.
- Over load protection by Amk thermal relay.
- Sheet metal Enclosure provides protection against dust, humidity & insects.

Application

- Agriculture, Industrial Area,
- Commercial Area.
- Dairy Farming.



Product Specification

Reference	Suitable for Pump/Motor Rating at 3Ø,415v		Relay Range Amp	Contactor Type	Std Pkg (Nos)	Mrp Per unit
	HP	KW				
AEC101BK1A3	3	2.2	4 a to 6 a	AMK-1	16	1649
AEC101BK1A5	5	3.7	6 a to 10 a			
AEC101BK1A7	7.5	5.5	9 a to 14 a			
AEC101BK2A10	10	7.5	13 a to 21 a	AMK-2		1720
AEC101BK2A12	12.5	9.2	20 a to 32 a			

AMK-1 Dol Starters AEC-102-DM1

Features

- Voltage: Three Phase 280 V to 415 V AC 50Hz.
- Amk1/2 type DMC contactor Used up to 12.5 hp.
- Over load protection by Amk thermal relay.
- Sheet metal Enclosure provides protection against dust, humidity & insects.

Application

- Agriculture, Industrial Area.
- Commercial Area.
- Dairy Farming.



Product Specification

Reference	Suitable for Pump/Motor Rating at 3Ø,415v		Relay Range Amp	Contactor Type	Std Pkg (Nos)	Mrp Per unit
	HP	KW				
AEC102DM1A3	3	2.2	4 a to 6 a	AMK-1	16	1773
AEC102DM1A5	5	3.7	6 a to 10 a			
AEC102DM1A7	7.5	5.5	9 a to 14 a			
AEC102DM2A10	10	7.5	13 a to 21 a	AMK-2		1842
AEC102DM2A12	12.5	9.2	20 a to 32 a			

AMU G-6 Dol Starters AEC-103-G6

Features

- Voltage: Three Phase 280 V to 415 V AC 50Hz.
- Amk1/2 type contactor Used up to 7.5 hp.
- Analog volt & amp meter.
- Over load protection by Amk thermal relay.
- High-low voltage protection, Auto start facility.
- Unbalance voltage protection.
- Phase failure and reverse phasing protection.
- Sheet metal Enclosure provides protection against dust, humidity & insects.

Application

- Homes.
- Submersible Pumps.
- Bore well Pump.
- Dairy Farming.
- Garden Sprinkler Commercials.
- Hotels.



Product Specification

Reference	Suitable for Pump/Motor Rating at 3Ø,415v		Relay Range Amp	Contactor Type	Std Pkg (Nos)	Mrp Per unit
	HP	KW				
AEC103G6A3	3	2.2	6 a to 10 a	AMK-1	6	5845
AEC103G6A5	5	3.7	9 a to 14 a		6	
AEC103G6A7	7.5	5.5	13 a to 21 a		6	

Dol Submersible Pump Panel AEC-104-ACH

Features

- Voltage: Three Phase 280 V to 415 V AC 50Hz.
- ACH type contactor Used up to 12.5 hp.
- Digital volt & amp meter.
- Over load protection by Amk thermal relay.
- High-low voltage protection,Auto start facility.
- Unbalance voltage protection.
- Phase failure and reverse phasing protection.
- Sheet metal Enclosure provides protection against dust, humidity & insects.

Application

- Homes, Submersible Pumps, Bore well Pump.

Product Specification

Reference	Maximum Submersible Pump Rating at 3Ø,415v		Relay Range Amp	Contactor Type	Std Pkg (Nos)	Mrp Per unit
	HP	KW				
AEC104DOL3	3	2.2	6 a to 10 a	ACH-16	6	4611
AEC104DOL5	5	3.7	10 a to 16 a	ACH-25	6	5020
AEC104DOL7	7.5	5.5	13 a to 21 a	ACH-32	6	5338
AEC104DOL10	10	7.5	20 a to 32 a	ACH-40	6	5375
AEC104DOL12	12.5	9.2	28 a to 42 a	ACH-40	6	5398



AMU G-10 Dol Starters AEC-105-G10

Features

- Voltage: Three Phase 280 V to 415 V AC 50Hz.
- AMU 1/2/3 type contactor Used up to 15 hp.
- Analog volt & amp meter.
- Over load protection by AMU thermal relay.
- High-low voltage protection,Auto start facility.
- Unbalance voltage protection.
- Phase failure and reverse phasing protection.
- Sheet metal Enclosure provides protection against dust, humidity & insects.

Application

- Homes, Submersible Pumps, Bore well Pump.

Product Specification

Reference	Maximum Submersible Pump Rating at 3Ø,415v		Relay Range Amp	Contactor Type	Std Pkg (Nos)	Mrp Per unit
	HP	KW				
AEC105G10A3	3	2.2	4 a to 6 a	AMU-1	6	7175
AEC105G10A5	5	3.7	6 a to 10 a		6	
AEC105G10A7	7.5	5.5	9 a to 14 a	AMU-2	6	
AEC105G10A10	10	7.5	13 a to 21 a		6	7420
AEC105G10A12	12.5	9.2	20 a to 32 a	AMU-3	6	7942
AEC105G10A15	15	11.5	28 a to 42 a		6	



DOL Panel Without MCCB AEC-106-DOL

Features

- Voltage: Three Phase 280 V to 415 V AC 50Hz.
- Ae 2 type contactor Used up to 250 hp.
- Analog volt & amp meter.
- Over load protection by Electronic relay.
- Noise and vibration free Operating System.
- High-low & Unbalance voltage protection.
- Auto start facility, With SPP Mode.
- Phase failure and reverse phasing protection.
- Volt select switch,on-off push button & indicator lamp.
- Sheet metal Enclosure provides protection against dust, humidity & insects.

Application

- Homes, Submersible Pumps, Bore well Pump.

Product Specification

Reference	Maximum Submersible Pump Rating at 3Ø, 415v		Relay Range Amp	MCCB Rating (A)	Contactor Type	Std Pkg (Nos)	Mrp Per unit
	HP	KW					
AEC106DOL10	10 HP	7.5	14 A TO 22A	NO	Ae2-2510	6	7331
AEC106DOL15	15 HP	11	20 A TO 32A	NO	Ae2-3210	6	7833
AEC106DOL20	20 HP	15	15 A TO 50A	NO	Ae2-4011	1	12775
AEC106DOL30	30 HP	22		NO	Ae2-6511	1	13307
AEC106DOL40	40 HP	30	34 A TO 200A	NO	Ae2-9511	1	14955
AEC106DOL60	60 HP	45		NO	Ae2-115	1	21038
AEC106DOL80	80 HP	60		NO	Ae2-150	1	22200
AEC106DOL100	100 HP	75		NO	Ae2-185	1	24218
AEC106DOL150	150 HP	112		NO	Ae2-225	1	27262
AEC106DOL200	200 HP	150		NO	Ae2-265	1	31487
AEC106DOL250	250 HP	187		NO	Ae2-330	1	36851



Mccb DOL Panel AEC-107-DOL

Features

- Voltage: Three Phase 280 V to 415 V AC 50Hz.
- Ae 2 type contactor Used up to 400 hp.
- Analog volt & amp meter.
- Over load protection by Electronic relay.
- Noise and vibration free Operating System.
- High-low & Unbalance voltage protection.
- Auto start facility, With SPP Mode.
- Phase failure and reverse phasing protection.
- Volt select switch, on-off push button & indicator lamp.
- Sheet metal Enclosure provides protection against dust, humidity & insects.

Application

- Homes, Submersible Pumps, Bore well Pump.

Product Specification

Reference	Maximum Submersible Pump Rating at 3Ø, 415 v		Relay Range Amp	MCCB Rating (A)	Contactor Type	Std Pkg (Nos)	Mrp Per unit
	HP	KW					
AEC107DOL10	10 HP	7.5	14 A TO 22A	32 A MCB	Ae2-2510	6	8885
AEC107DOL15	15 HP	11	20 A TO 32A	32 A MCB	Ae2-3210	6	9013
AEC107DOL20	20 HP	15	15 A TO 50A	63	Ae2-4011	1	15096
AEC107DOL30	30 HP	22		63	Ae2-6511	1	16227
AEC107DOL40	40 HP	30		125	Ae2-9511	1	20335
AEC107DOL60	60 HP	45		125	Ae2-115	1	25618
AEC107DOL80	80 HP	60		160	Ae2-150	1	28044
AEC107DOL100	100 HP	75	34 A TO 200A	160	Ae2-185	1	29964
AEC107DOL150	150 HP	112		250	Ae2-225	1	32951
AEC107DOL200	200 HP	150		250	Ae2-265	1	37256
AEC107DOL250	250 HP	187	70A TO 300A	250	Ae2-330	1	42629
AEC107DOL300	300 HP	225		400	Ae2-400	1	46338
AEC107DOL400	400 HP	300		400	Fk-500	1	50716



2IN1 Tow & Three Phase Dol Panel AEC-108-2IN1

Features

- Voltage: 2 & 3 Phase 280 V to 415 V AC 50Hz.
- Ae 2 & AMU 1/2 type contactor Used up to 7.5 hp.
- Analog volt & amp meter.
- Over load protection by Mcb & Jr-38 thermal relay.
- Include EPCOS Run capacitor.
- different buttons for tuning on two phase and three phase power.
- Sheet metal enclosures provide protection against dust, humidity, and insects.

Application

- Homes, Submersible Pumps, Bore well Pump.

Product Specification

Reference	Maximum Submersible Pump Rating at 3Ø, 2Ø		Relay/MCB Range Amp	Capacitor rating (MFD)		Contactor Type	Std Pkg (Nos)	Mrp Per unit
	HP	KW		Run	Start			
AEC1082IN13	3	2.2	14 a to 22 a C32	50 x 2	NO	Ae2-3210 ACH-40	1	9371
AEC1082IN15	5	3.7	14 a to 22 a C32	50 x 3	NO	Ae2-3210 Amu-1	1	10658
AEC1082IN17	7.5	5.5	20 a to 32 a C63	72 x 3	NO	Ae2-3210 Amu-2	1	11278



Panel spares

Reference	Description	Std pkg (nos)	M.r.p Per unit
SAEATHV01	Ambica Autoswitch hv	20	771
SAEATHV02	Ambica Autoswitch Variable hv	20	797
SAEATSZ03	Ambica Autoswitch Sz5	20	873
SAERE1504	Electronic Overload Relay 2 phase 15 to 50 a	20	1675
SAERE3405	Electronic Overload Relay 2 phase 34 to 200 a	20	1675
SAERE7006	Electronic Overload Relay 2 phase 70 to 300 a	20	1675
SAECOBMK1	3 pole Contactor AMK-1 415v	10	956
SAECODMK2	3 pole Contactor AMK -2 DMC 415v	10	1020
SAECOCH25	Contactor ACH 4 Pole 25 A	10	1180
SAECOCH40	Contactor ACH 4 Pole 40 A	10	1300



Smart Digital Three phase Dol Panel AEC-201-Dol

Features

- Voltage: Three Phase 280 V to 415 V AC 50 Hz
- ACH/AMU type contactor (rated up to 20hp)
- High voltage protection.
- Low voltage protection.
- Reverse Phase protection.
- Overload protection.
- Adjustable overload from 1 to 80 A.
- Adjustable dry run current from 2 to 75 A.
- Adjustable voltage limit.
- Start and stop buttons provided.
- Cyclic timer provided with bypass facility.
- Delay timer provided with bypass facility.
- On Delay timer and off delay time provided.
- Auto switch provided with bypass facility (automatically starts the unit when power is restored).
- Auto switch timer provided (starts the unit with a preset time after power is restored; timer adjustable).
- High accuracy in overload and dry run current.
- Auto ,SPP mode available.
- User can bypass all the protection from settings.
- Error messages shown on display.
- RESET button provided to reset the unit.
- Metal enclosure protects against dust, humidity, and insects



Application

- Homes, Submersible Pumps, Bore well Pump.

Product Specification

Reference	Maximum Submersible Pump Rating at 3Ø,415v		Relay Range Amp	Contactor Type	Std Pkg (Nos)	Mrp Per unit
	HP	KW				
AEC201DOL3	3 hp	2.2	1 a to 20 a Mpd-A3	ACH-25 A	6	5269
AEC201DOL5	5 hp	3.7	1 a to 30 a Mpd-A3	ACH-25 A	6	
AEC201DOL7	7.5 hp	5.5	1 a to 40 a Mpd-A3	ACH-40 A	6	5396
AEC201DOL10	10 hp	7.5	1 a to 40 a Mpd-A3	AMU-2	6	6309
AEC201DOL15	15 hp	11.5	1 a to 50 a Mpd-A3	AMU-3	6	6833
AEC201DOL20	20 hp	15	1 a to 55 a Mpd-A3	Ae2-4011	1	9056

Smart Digital DOL Panel Without MCCB AEC-202-DOL

Features

- Voltage: Three Phase 280 V to 415 V AC 50 Hz.
- Ae2 type Heavy duty contactor(rated up to 250 hp).
- R,Y,B Ampere Meter and R, Y, B Volt Meter.
- High Voltage Protection.
- Low Voltage Protection.
- Short Circuit Protection.
- Overload Protection.
- AC Contactor operated Fast Switching.
- Inbuilt Current Unbalance Protection.
- Inbuilt Phase Unbalance Protection.
- Phase Failure Protection.
- Reverse Phase Protection.
- Low Power Consumption & High Load Capacity.
- Adjustable overload from 1 to 300 A.
- Built-In Adjustable Dry-Run Protection.
- Adjustable Voltage Range Soft Start/Stop Buttons.
- One Time Relay Bypass Feature.
- Adjustable Auto Switch Timer.
- Automatic/Manual Operation.
- Noise & Vibration Free Operation.
- Adjustable Delay Time for OL-Dry Run.
- Adjustable Start Delay Time Optional ON/Off SPP Function.
- Low Maintenance on Mechanical Equipment.
- DMC Terminal Block for Easy Wiring.
- Long life and positive circuit interruption.
- Simple Construction and Wiring.
- WLC Function Available Optional.
- Metal enclosure protects against dust, humidity, and insects.



Application

- Submersible Pumps, Bore well Pump.

Product Specification

Reference	Maximum Submersible Pump Rating at 3Ø, 415v		Relay Range Amp	MCCB Rating (A)	Contactor Type	Std Pkg (Nos)	Mrp Per unit
	HP	KW					
AEC202DOL30	30 HP	22	1 a to 200 a Mpd-A2	NO	Ae2-6511	1	15822
AEC202DOL40	40 HP	30		NO	Ae2-9511	1	17520
AEC202DOL60	60 HP	45		NO	Ae2-115	1	22605
AEC202DOL80	80 HP	60		NO	Ae2-150	1	23336
AEC202DOL100	100 HP	75		NO	Ae2-185	1	25593
AEC202DOL150	150 HP	112		NO	Ae2-225	1	28798
AEC202DOL200	200 HP	150	1 a to 300 a Mpd-A2	NO	Ae2-265	1	33002
AEC202DOL250	250 HP	187		NO	Ae2-330	1	38173



Smart Digital Mccb DOL Panel **AEC-203-DOL**

Features

- Voltage: Three Phase 280 V to 415 V AC 50 Hz.
- Ae2 type Heavy duty contactor(rated up to 400 hp).
- Heavy MCCB, Copper Busbar power connection.
- R,Y,B Ampere Meter and R, Y, B Volt Meter.
- High Voltage Protection.
- Low Voltage Protection.
- Short Circuit Protection.
- Overload Protection.
- AC Contactor operated Fast Switching.
- Inbuilt Current Unbalance Protection.
- Inbuilt Phase Unbalance Protection.
- Phase Failure Protection.
- Reverse Phase Protection.
- Low Power Consumption & High Load Capacity.
- Adjustable overload from 1 to 300 A.
- Noise & Vibration Free Operation
- Built-In Adjustable Dry-Run Protection .
- Adjustable Voltage Range Soft Start/Stop Buttons.
- One Time Relay Bypass Feature.
- Adjustable Auto Switch Timer.
- Automatic/Manual Operation.
- Adjustable Delay Time for OL-Dry Run.
- Adjustable Start Delay Time Optional ON/Off SPP Function.
- Low Maintenance on Mechanical Equipment.
- DMC Terminal Block for Easy Wiring.
- Long life and positive circuit interruption.
- Simple Construction and Wiring.
- WLC Function Available Optional.
- Metal enclosure protects against dust, humidity, and insects.



Application

- Homes, Submersible Pumps, Bore well Pump.

Product Specification

Reference	Maximum Submersible Pump Rating at 3Ø, 415 v		Relay Range Amp	MCCB Rating (A)	Contactor Type	Std Pkg (Nos)	Mrp Per unit
	HP	KW					
AEC203DOL20	20 HP	15	1 a to 300 a Mpd-A2	63	Ae2-4011	1	17211
AEC203DOL30	30 HP	22		63	Ae2-6511	1	18282
AEC203DOL40	40 HP	30		125	Ae2-9511	1	23391
AEC203DOL60	60 HP	45		125	Ae2-115	1	27285
AEC203DOL80	80 HP	60		160	Ae2-150	1	29464
AEC203DOL100	100 HP	75		160	Ae2-185	1	31431
AEC203DOL150	150 HP	112		250	Ae2-225	1	34298
AEC203DOL200	200 HP	150	250	Ae2-265	1	38949	
AEC203DOL250	250 HP	187	1 a to 300 a Mpd-A2	250	Ae2-330	1	43773
AEC203DOL300	300 HP	225		400	Ae2-400	1	47262
AEC203DOL400	400 HP	300		400	Fk-500	1	51355



Panel spares

Reference	Description	Std pkg (nos)	Mrp Per unit
SAEMPDW73	MPD-A3 72x72 1a to 80a 440 V (Three phase with 3 nos c-t)	10	2010
SAEMPDO93	MPD-A2 96x96 1a to 200 a 440 v (Three phase With c-t)	10	5980
SAETOG206	Toggle switch On-Off	10	65
SAEPUARNO	Red Push button AHD NO	20	81
SAEPUARNC	Red Push button AHD NC	20	81
SAEPUAGNO	Green Push button AHD NO	20	81



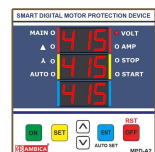
Toggle switch On-Off



Pushbutton AHD



MPD-3PH 72x72
Three phase 1a to 80a 440 V



96x96 MPD-A2
1a to 200 a 440 v

AMU G-15 FASD Fully Automatic Star Delta Starters AEC-301-G15

Features

- Voltage: Three Phase 280 V to 415 V AC 50Hz.
- AMK-1 type 3 pole contactor Used up to 15 hp.
- Analog volt & amp meter.
- Over load protection by AMK thermal relay.
- SDZ5 star delta Timer .
- High-low & Unbalance voltage protection.
- Auto start facility, With SPP Mode.
- Phase failure and reverse phasing protection.
- Volt select switch, ON-OFF push button & indicator lamp.
- Dust, humidity, and insects protection.

Application

- Submersible Pumps, Bore well Pump, induction motor.

Product Specification

Reference	Suitable for Pump/Motor Rating at 3Ø,415v		Relay Range Amp	Contactor Type	Std Pkg (Nos)	Mrp Per unit
	HP	KW				
AEC301G15A7	7.5	5.5	6 a to 10 a	AMK-1	1	13640
AEC301G15A10	10	7.5	9 a to 14 a		1	
AEC301G15A12	12.5	9.6	13 a to 21 a		1	
AEC301G15A15	15	11.5	20 a to 32 a		1	



AMU G-20 FASD Fully Automatic Star Delta Starters AEC-302-G20

Features

- Voltage: Three Phase 280 V to 415 V AC 50Hz.
- AMU-2/3 type 3 pole contactor Used up to 20 hp.
- Analog volt & amp meter.
- Over load protection by AMU thermal relay.
- SDZ5 star delta Timer .
- High-low & Unbalance voltage protection.
- Auto start facility, With SPP Mode.
- Phase failure and reverse phasing protection.
- Volt select switch, ON-OFF push button & indicator lamp.
- Sheet metal Enclosure provides protection against dust, humidity & insects.

Application

- Submersible Pumps, Bore well Pump, induction motor.

Product Specification

Reference	Suitable for Pump/Motor Rating at 3Ø,415v		Relay Range Amp	Contactor Type	Std Pkg (Nos)	Mrp Per unit
	HP	KW				
AEC302G20A10	10	7.5	9 a to 14 a	AMU-2	1	14869
AEC302G20A15	15	11.5	13 a to 21 a		1	
AEC302G20A20	20	15	20 a to 32 a	AMU-3	1	16251
AEC302G20B20	20	15	28 a to 42 a		1	16413



Without MCCB Star Delta Panel AEC-303-ESD

Features

- Voltage: Three Phase 280 V to 415 V AC 50Hz.
- Ae 2 type contactor Used up to 100 hp.
- Analog volt & amp meter.
- Over load protection by JR-38 & JR-93 thermal relay.
- Fully Automatic Et-100 star delta Timer .
- High-low & Unbalance voltage protection.
- Auto start facility, With SPP Mode.
- Phase failure and reverse phasing protection.
- Volt select switch, ON-OFF push button & indicator lamp.
- Sheet metal Enclosure provides protection against dust, humidity & insects.

Application

- Submersible Pumps, Bore well Pump, induction motor.

Product Specification

Reference	Maximum Submersible Pump Rating at 3Ø,415v		Relay Range Amp	MCCB Rating (A)	Contactor Type	Std Pkg (Nos)	Mrp Per unit
	HP	KW					
AEC303ESD30	30 HP	23	23 A TO 32 A	NO	Ae2-4011-4011-4011	1	20538
AEC303ESD40	40 HP	30	23 A TO 32 A	NO	Ae2-5011-5011-5011	1	22404
AEC303ESD60	60 HP	45	37 A TO 50 A	NO	Ae2-8011-8011-6511	1	24693
AEC303ESD80	80 HP	60	48 A TO 65 A	NO	Ae2-9511-9511-8011	1	26680
AEC303ESD100	100 HP	75	63 A TO 80 A	NO	Ae2-9511-9511-9511	1	27265



Without MCCB Star Delta Panel AEC-304-WSD

Features

- Voltage: Three Phase 280 V to 415 V AC 50Hz.
- Ae 2 type contactor Used up to 150 hp.
- Copper Busbar power connection.
- Over load protection by Electronic relay.
- Fully Automatic Et-100 star delta Timer.
- Noise and vibration free Operating System.
- Analog volt & amp meter.
- High-low & Unbalance voltage protection.
- Auto start facility, With SPP Mode.
- Phase failure and reverse phasing protection.
- Volt select switch, ON-OFF push button & indicator lamp.
- Sheet metal enclosures provide protection against dust, humidity, and insects.

Application

- Submersible Pumps, Bore well Pump, induction motor.

Product Specification

Reference	Maximum Submersible Pump Rating at 3Ø, 415v		Relay Range Amp	MCCB Rating (A)	Contactor Type	Std Pkg (Nos)	Mrp Per unit
	HP	KW					
AEC304WSD15	15 HP	11	12 A TO 18A	NO	Ae2-3210-3210-3210	1	14493
AEC304WSD30	30 HP	22	23 A TO 32A	NO	Ae2-4011-4011-4011	1	20864
AEC304WSD40	40 HP	30	34 A TO 200A	NO	Ae2-5011-5011-5011	1	22736
AEC304WSD60	60 HP	45		NO	Ae2-8011-8011-6511	1	25902
AEC304WSD80	80 HP	60		NO	Ae2-9511-9511-8011	1	27387
AEC304WSD100	100 HP	75		NO	Ae2-9511-9511-9511	1	27582
AEC304WSD150	150 HP	112		NO	Ae2-115-115-9511	1	39138



Without MCCB Star Delta Panel AEC-305-WHSD HEAVY DUTY CLASS-1

Features

- Voltage: Three Phase 280 V to 415 V AC 50Hz.
- Ae 2 type contactor Used up to 150 hp.
- Copper Busbar power connection.
- Over load protection by Electronic relay.
- Fully Automatic Et-100 star delta Timer.
- Noise and vibration free Operating System.
- Analog volt & amp meter.
- High-low & Unbalance voltage protection.
- Auto start facility, With SPP Mode.
- Phase failure and reverse phasing protection.
- Volt select switch, ON-OFF push button & indicator lamp.
- Sheet metal enclosures provide protection against dust, humidity, and insects.

Application

- Submersible Pumps, Bore well Pump, induction motor.

Product Specification

Reference	Maximum Submersible Pump Rating at 3Ø, 415v		Relay Range Amp	MCCB Rating (A)	Contactor Type	Std Pkg (Nos)	Mrp Per unit
	HP	KW					
AEC305WHSD30	15 HP to 30 HP	23	15 A TO 50A	NO	Ae2-4011-4011-4011	1	22182
AEC305WHSD40	30 HP to 40 HP	30	34 A TO 200A	NO	Ae2-6511-6511-6511	1	24291
AEC305WHSD60	40 HP to 60 HP	45		NO	Ae2-9511-9511-9511	1	27033
AEC305WHSD80	60 HP to 80 HP	60		NO	Ae2-115-115-9511	1	36293
AEC305WHSD100	80 HP to 100 HP	75		NO	Ae2-150-150-9511	1	39013
AEC305WHSD130	100 HP to 130 HP	100		NO	Ae2-185-185-115	1	48120
AEC305WHSD150	130 HP to 150 HP	112		NO	Ae2-225-225-150	1	54676



MCCB Star Delta Panel AEC-306-SD

Features

- Voltage: Three Phase 280 V to 415 V AC 50Hz.
- Ae 2 type contactor Used up to 150 hp.
- Heavy MCCB, Copper Busbar power connection.
- Over load protection by Electronic relay.
- Fully Automatic Et-100 star delta Timer.
- Noise and vibration free Operating System.
- Analog volt & amp meter.
- High-low & Unbalance voltage protection.
- Auto start facility, With SPP Mode.
- Phase failure and reverse phasing protection.
- Volt select switch, ON-OFF push button & indicator lamp.
- Sheet metal enclosures provide protection against dust, humidity, and insects.

Application

- Submersible Pumps, Bore well Pump, induction motor.

Product Specification

Reference	Maximum Submersible Pump Rating at 3Ø, 415v		Relay Range Amp	MCCB Rating (A)	Contactor Type	Std Pkg (Nos)	Mrp Per unit
	HP	KW					
AEC306SD15	15 HP	11	12 A TO 18A	32	Ae2-3210-3210-3210	1	16233
AEC306SD30	30 HP	22	23 A TO 32A	63	Ae2-4011-4011-4011	1	21676
AEC306SD40	40 HP	30	34 A TO 200A	125	Ae2-5011-5011-5011	1	25782
AEC306SD60	60 HP	45		125	Ae2-8011-8011-6511	1	29260
AEC306SD80	80 HP	60		250	Ae2-9511-9511-8011	1	32291
AEC306SD100	100 HP	75		250	Ae2-9511-9511-9511	1	32764
AEC306SD150	150 HP	112		250	Ae2-115-115-9511	1	44098



MCCB Star Delta Panel **AEC-307-HSD HEAVY DUTY CLASS-1**

Features

- Voltage: Three Phase 280 V to 415 V AC 50Hz.
- Ae 2 type heavy contactor Used up to 150 hp.
- Heavy MCCB, Copper Busbar power connection.
- Fully Automatic Et-100 star delta Timer.
- Over load protection by Electronic relay.
- Noise and vibration free Operating System.
- Analog volt & amp meter.
- High-low & Unbalance voltage protection.
- Auto start facility, With SPP Mode.
- Phase failure and reverse phasing protection.
- Volt select switch, ON-OFF push button & indicator lamp.
- Sheet metal enclosures provide protection against dust, humidity, and insects.

Application

- Submersible Pumps, Bore well Pump, induction motor.

Product Specification

Reference	Maximum Submersible Pump Rating at 3Ø, 415v		Relay Range Amp	MCCB Rating (A)	Contactor Type	Std Pkg (Nos)	Mrp Per unit
	HP	KW					
AEC307HSD30	15 HP to 30 HP	23	15 A TO 50A	63	Ae2-5011-5011-5011	1	26591
AEC307HSD40	30 HP to 40 HP	30	34 A TO 200A	125	Ae2-6511-6511-6511	1	29224
AEC307HSD60	40 HP to 60 HP	45		125	Ae2-9511-9511-9511	1	33038
AEC307HSD80	60 HP to 80 HP	60		160	Ae2-115-115-9511	1	42833
AEC307HSD100	80 HP to 100 HP	75		160	Ae2-150-150-9511	1	43711
AEC307HSD130	100 HP to 130 HP	100		250	Ae2-185-185-115	1	52951
AEC307HSD150	130 HP to 150 HP	112		250	Ae2-225-225-150	1	61144



ATS Star Delta Mccb Panel **AEC-308-ATS**

Features

- Voltage: Three Phase 280 V to 415 V AC 50Hz.
- Ae 2 type contactor Used up to 300 hp.
- Heavy MCCB, Copper Busbar power connection.
- Fully Automatic ATS-100 star delta Timer.
- Over load protection by Electronic relay.
- ATS semi copper Transformer.
- Noise and vibration free Operating System.
- High-low & Unbalance voltage protection.
- Auto start facility, With SPP Mode.
- Phase failure and reverse phasing protection.
- Analog volt & amp meter.
- Volt & Ampere R,Y,B select switch.
- ON-OFF push button & R,Y,B, Motor On-spp indicator lamp.
- Sheet metal enclosures provide protection against dust, humidity, and insects.

Application

- Submersible Pumps, Bore well Pump, induction motor.

Product Specification

Reference	Maximum Submersible Pump Rating at 3Ø, 415 v		Relay Range Amp	MCCB Rating (A)	Contactor Type	Std Pkg (Nos)	Mrp Per unit
	HP	KW					
AEC308ATS40	40 HP	30	34 A TO 200A	125	Ae2-9511-6511	1	41360
AEC308ATS60	60 HP	45		160	Ae2-115-9511	1	54120
AEC308ATS80	80 HP	60		160	Ae2-150-9511	1	55255
AEC308ATS100	100 HP	75		250	Ae2-185-115	1	63867
AEC308ATS150	150 HP	112		400	Ae2-225-150	1	69915
AEC308ATS200	200 HP	150		400	Ae2-265-225	1	77885
AEC308ATS250	250 HP	185	70 A TO 300A	400	Ae2-330-225	1	83620
AEC308ATS300	300 HP	225		400	Ae2-400-225	1	88251

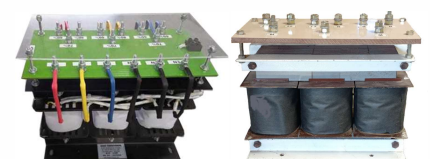


Panel spares

Reference	Description	Std Pkg (Nos)	Mrp Per unit
SAETIATS1	Timer Ats-100 Use Ats Star Delta.	10	963
SAETIET01	Timer Et-100 Use Star Delta	10	816
SAEATS40	ATS Transformers 40 HP	1	On Required
SAEATS60	ATS Transformers 60 HP	1	On Required
SAEATS80	ATS Transformers 80 HP	1	On Required
SAEATS100	ATS Transformers 100 HP	1	On Required



TIMER



ATS Transformers

Smart Digital Star delta Panel AEC-501-WSD

Features

- Voltage: Three Phase 280 V To 415 V Ac 50 Hz.
- Ach Type Contactor (rated Up To 40 Hp).
- Copper Busbar Power Connection.
- High Voltage & Low Voltage Protection.
- Reverse Phase Protection.
- Overload Protection.
- Adjustable Overload From 1 To 80 A.
- Adjustable Dry Run Current From 2 To 75 A.
- Adjustable Voltage Limit.
- Start And Stop Buttons Provided.
- Cyclic Timer Provided With Bypass Facility.
- Delay Timer Provided With Bypass Facility.
- Adjustable Start Delay Time.
- Bakelite terminal block for easy wiring.
- On Delay Timer And Off Delay Time Provided.
- Auto Switch Provided With Bypass Facility (automatically Starts The Unit When Power Is Restored).
- Auto Switch Timer Provided (starts The Unit With A Preset Time After Power Is Restored; Timer Adjustable).
- High Accuracy In Overload And Dry Run Current.
- Auto ,spp Mode Available.
- User Can Bypass All The Protection From Settings.
- Error Messages Shown On Display.
- Reset Button Provided To Reset The Unit.
- Metal Enclosure Protects Against Dust, Humidity, And Insects.



Application

- Submersible Pumps, Bore well Pump, induction motor, Flour Milling Machine.

Product Specification

Reference	Maximum Submersible Pump Rating at 3Ø,415v		Relay Range Amp	Contactor Type	Std Pkg (Nos)	Mrp Per unit
	HP	KW				
AEC501WSD15	15 hp	11	1 a to 35 a Mpd-A3	ACH-40 A	1	11176
AEC501WSD25	25 hp	19	1 a to 40 a Mpd-A3	AMU-2	1	12175
AEC501WSD30	30 hp	23	1 a to 55 a Mpd-A3	AMU-3	1	13782
AEC501WSD40	40 hp	30	1 a to 80 a Mpd-A3	Ae2-4011	1	16567

Smart Digital Without MCCB Star Delta Panel AEC-502-WSD

Features

- Voltage: Three Phase 280 V To 415 V Ac 50 Hz.
- Ae2 Type Heavy Duty Contactor(rated Up To150 Hp).
- Copper Busbar Power Connection.
- R,Y,B Ampere Meter And R, Y, B Volt Meter.
- High Voltage Protection.
- Low Voltage Protection.
- Short Circuit Protection.
- Overload Protection.
- Ac Contactor Operated Fast Switching.
- Inbuilt Current Unbalance Protection.
- Inbuilt Phase Unbalance Protection.
- Phase Failure Protection.
- Reverse Phase Protection.
- Low Power Consumption & High Load Capacity.
- Adjustable Overload From 1 To 200 A.
- Built-in Adjustable Dry-run Protection.
- Adjustable Voltage Range Soft Start/stop Buttons.
- One Time Relay Bypass Feature.
- Adjustable Auto Switch Timer.
- Automatic/manual Operating.
- Noise & Vibration Free Operating.
- Adjustable Delay Time For Ol-dry Run.
- Adjustable Start Delay Time ,on/off Spp Function.
- Low Maintenance On Mechanical Equipment.
- Long Life And Positive Circuit Interruption.
- Simple Construction And Wiring.
- Wlc Function Available Optional.
- Metal Enclosure Protects Against Dust, Humidity, And Insects.



Application

- Submersible Pumps, Bore well Pump, induction motor.

Product Specification

Reference	Maximum Submersible Pump Rating at 3Ø, 415v		Relay Range Amp	MCCB Rating (A)	Contactor Type	Std Pkg (Nos)	Mrp Per unit
	HP	KW					
AEC502WSD15	15 HP	11	1 a to 100 a	NO	Ae2-3210-3210-3210	1	16949
AEC502WSD30	30 HP	22	Mpd-A2	NO	Ae2-4011-4011-4011	1	22758
AEC502WSD40	40 HP	30	1 a to 200 a Mpd-A2	NO	Ae2-5011-5011-5011	1	24213
AEC502WSD60	60 HP	45		NO	Ae2-8011-8011-6511	1	27493
AEC502WSD80	80 HP	60		NO	Ae2-9511-9511-8011	1	29302
AEC502WSD100	100 HP	75		NO	Ae2-9511-9511-9511	1	29584
AEC502WSD150	150 HP	112		NO	Ae2-115-115-9511	1	40833

Smart Digital Without MCCB Star Delta Panel **AEC-503-WHSD** HEAVY DUTY CLASS-1

Features

- Voltage: Three Phase 280 V to 415 V AC 50 Hz.
- Ae2 type Heavy duty contactor(rated up to 150 hp)
- Copper Busbar power connection.
- R,Y,B Ampere Meter and R, Y, B Volt Meter.
- High Voltage Protection.
- Low Voltage Protection.
- Short Circuit Protection.
- Overload Protection.
- AC Contactor operated Fast Switching.
- Inbuilt Current Unbalance Protection.
- Inbuilt Phase Unbalance Protection.
- Phase Failure Protection.
- Reverse Phase Protection.
- Low Power Consumption & High Load Capacity.
- Adjustable overload from 1 to 200 A.
- Built-In Adjustable Dry-Run Protection
- Adjustable Voltage Range Soft Start/Stop Buttons
- One Time Relay Bypass Feature.
- Adjustable Auto Switch Timer.
- Automatic/Manual Operating.
- Noise & Vibration Free Operating.
- Adjustable Delay Time for OL-Dry Run.
- Adjustable Start Delay Time ,ON/Off SPP Function.
- Low Maintenance on Mechanical Equipment.
- Long life and positive circuit interruption
- Simple Construction and Wiring.
- WLC Function Available Optional.
- Metal enclosure protects against dust, humidity, and insects.



Application

- Submersible Pumps, Bore well Pump, induction motor .

Product Specification

Reference	Maximum Submersible Pump Rating at 3Ø,415v		Relay Range Amp	MCCB Rating (A)	Contactor Type	Std Pkg (Nos)	Mrp Per unit
	HP	KW					
AEC503HWSD30	15 HP to 30 HP	23	1 a to 200 a Mpd-A2	NO	Ae2-5011-5011-5011	1	22751
AEC503HWSD40	30 HP to 40 HP	30		NO	Ae2-6511-6511-6511	1	25953
AEC503HWSD60	40 HP to 60 HP	45		NO	Ae2-9511-9511-9511	1	28513
AEC503HWSD80	60 HP to 80 HP	60		NO	Ae2-115-115-9511	1	38773
AEC503HWSD100	80 HP to 100 HP	75		NO	Ae2-150-150-9511	1	39493
AEC503HWSD130	100 HP to 130 HP	100		NO	Ae2-185-185-115	1	52011
AEC503HWSD150	130 HP to 150 HP	112		NO	Ae2-225-225-150	1	58153



Smart Digital MCCB Star Delta Panel **AEC-504-SD**

Features

- Voltage: Three Phase 280 V to 415 V AC 50 Hz.
- Ae2 type Heavy duty contactor(rated up to 150 hp).
- Heavy MCCB & Copper Busbar power connection.
- R,Y,B Ampere Meter and R, Y, B Volt Meter.
- High Voltage Protection.
- Low Voltage Protection.
- Short Circuit Protection.
- Overload Protection.
- AC Contactor operated Fast Switching.
- Inbuilt Current Unbalance Protection.
- Inbuilt Phase Unbalance Protection.
- Phase Failure Protection.
- Reverse Phase Protection.
- Low Power Consumption & High Load Capacity.
- Adjustable overload from 1 to 200 A.
- Built-In Adjustable Dry-Run Protection.
- Adjustable Voltage Range Soft Start/Stop Buttons.
- One Time Relay Bypass Feature.
- Adjustable Auto Switch Timer.
- Automatic/Manual Operating.
- Noise & Vibration Free Operating.
- Adjustable Delay Time for OL-Dry Run.
- Adjustable Start Delay Time ,ON/Off SPP Function.
- Low Maintenance on Mechanical Equipment.
- Long life and positive circuit interruption.
- Simple Construction and Wiring.
- WLC Function Available Optional.
- Metal enclosure protects against dust, humidity, and insects.



Application

- Submersible Pumps, Bore well Pump, induction motor.

Product Specification

Reference	Maximum Submersible Pump Rating at 3Ø, 415v		Relay Range Amp	MCCB Rating (A)	Contactor Type	Std Pkg (Nos)	Mrp Per unit
	HP	KW					
AEC504SD30	30 HP	22	1 a to 100 a Mpd-A2	63	Ae2-4011-4011-4011	1	23175
AEC504SD40	40 HP	30		125	Ae2-5011-5011-5011	1	27147
AEC504SD60	60 HP	45	1 a to 200 a Mpd-A2	125	Ae2-8011-8011-6511	1	30435
AEC504SD80	80 HP	60		160	Ae2-9511-9511-8011	1	33680
AEC504SD100	100 HP	75		160	Ae2-9511-9511-9511	1	33987
AEC504SD150	150 HP	112		250	Ae2-115-115-9511	1	44887



Smart Digital MCCB Star Delta Panel **AEC-505-HSD** HEAVY DUTY CLASS-1

Features

- Voltage: Three Phase 280 V to 415 V AC 50 Hz.
- Ae2 type Heavy duty contactor(rated up to 150 hp).
- Heavy MCCB & Copper Busbar power connection.
- R,Y,B Ampere Meter and R, Y, B Volt Meter.
- High Voltage Protection.
- Low Voltage Protection.
- Short Circuit Protection.
- Overload Protection.
- AC Contactor operated Fast Switching.
- Inbuilt Current Unbalance Protection.
- Inbuilt Phase Unbalance Protection.
- Phase Failure Protection.
- Reverse Phase Protection.
- Low Power Consumption & High Load Capacity.
- Adjustable overload from 1 to 200 A.
- Built-In Adjustable Dry-Run Protection.
- Adjustable Voltage Range Soft Start/Stop Buttons.
- One Time Relay Bypass Feature.
- Adjustable Auto Switch Timer.
- Automatic/Manual Operating.
- Noise & Vibration Free Operating.
- Adjustable Delay Time for OL-Dry Run.
- Adjustable Start Delay Time ,ON/Off SPP Function.
- Low Maintenance on Mechanical Equipment.
- Long life and positive circuit interruption.
- Simple Construction and Wiring.
- WLC Function Available Optional.
- Metal enclosure protects against dust, humidity, and insects.

Application

- Submersible Pumps, Bore well Pump, induction motor .

Product Specification

Reference	Maximum Submersible Pump Rating at 3Ø,415v		Relay Range Amp	MCCB Rating (A)	Contactor Type	Std Pkg (Nos)	Mrp Per unit
	HP	KW					
AEC505HSD30	15 HP to 30 HP	23	1 a to 200 a Mpd-A2	63	Ae2-5011-5011-5011	1	23109
AEC505HSD40	30 HP to 40 HP	30		125	Ae2-6511-6511-6511	1	27605
AEC505HSD60	40 HP to 60 HP	45		125	Ae2-9511-9511-9511	1	33076
AEC505HSD80	60 HP to 80 HP	60		160	Ae2-115-115-9511	1	44507
AEC505HSD100	80 HP to 100 HP	75		160	Ae2-150-150-9511	1	45278
AEC505HSD130	100 HP to 130 HP	100		250	Ae2-185-185-115	1	54500
AEC505HSD150	130 HP to 150 HP	112		250	Ae2-225-225-150	1	64200



Smart Digital ATS Star Delta Mccb Panel **AEC-506-ATS**

Features

- Voltage: Three Phase 280 V to 415 V AC 50 Hz.
- Ae2 type Heavy duty contactor(rated up to 300 hp).
- Heavy MCCB & Copper Busbar power connection.
- R,Y,B Ampere Meter and R, Y, B Volt Meter.
- High Voltage Protection.
- Low Voltage Protection.
- Short Circuit Protection.
- Overload Protection.
- AC Contactor operated Fast Switching.
- Inbuilt Current Unbalance Protection.
- Inbuilt Phase Unbalance Protection.
- Phase Failure Protection.
- Reverse Phase Protection.
- Low Power Consumption & High Load Capacity.
- Adjustable overload from 1 to 300 A.
- Built-In Adjustable Dry-Run Protection.
- Adjustable Voltage Range Soft Start/Stop Buttons.
- One Time Relay Bypass Feature.
- Adjustable Auto Switch Timer.
- Automatic/Manual Operating.
- Noise & Vibration Free Operating.
- Adjustable Delay Time for OL-Dry Run.
- Adjustable Start Delay Time ,ON/Off SPP Function.
- Low Maintenance on Mechanical Equipment.
- Long life and positive circuit interruption.
- Simple Construction and Wiring.
- WLC Function Available Optional.
- ATS semi copper Transformer.
- Metal enclosure protects against dust, humidity, and insects.

Application

- Submersible Pumps, Bore well Pump, induction motor.

Product Specification

Reference	Maximum Submersible Pump Rating at 3Ø,415v		Relay Range Amp	MCCB Rating (A)	Contactor Type	Std Pkg (Nos)	Mrp Per unit
	HP	KW					
AEC506ATS40	40 hp	30	1 a to 200 a Mpd-A2	125	Ae2-9511-6511	1	45016
AEC506ATS80	60 hp	45		125	Ae2-115-9511	1	55640
AEC506ATS80	80 HP	60		160	Ae2-150-9511	1	56355
AEC506ATS100	100 HP	75		250	Ae2-185-115	1	65095
AEC506ATS150	150 HP	112		400	Ae2-225-150	1	71338
AEC506ATS200	200 HP	150		400	Ae2-265-225	1	78738
AEC506ATS250	250 HP	185	1 a to 300 a Mpd-A2	400	Ae2-330-225	1	84287
AEC506ATS300	300 HP	225		400	Ae2-400-225	1	88589



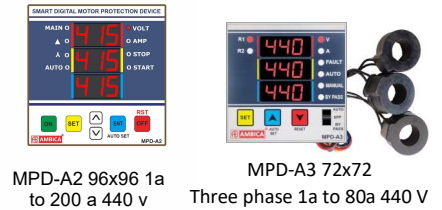
C.V.R Coil Voltage Regulator

Reference	Description	Used in The Contactor Coil	Std pkg (nos)	Mrp Per unit
SAECPD0A1	CPD-A1	Ae2-4011 to Ae2-9511	20	1050
SAE CVRFGH	CVR-FGH	Ae2-115 to Ae2-225	20	1170
SAE CVR00R	CVR -R	Ae2-225, Ae2-265	20	1182
SAE CVR103	CVR-Z103	400A ,500A	20	1364



Smart Digital Motor Protection Device

Reference	Description	Std pkg (nos)	Mrp Per unit
SAEM3PW73	MPD-A3 72x72 1a to 80a 440 V with 3 nos c-t	20	2010
SAEMA2O93	MPD-A2 96x96 1a to 200 a 440 v with 3 nos c-t	20	6637
SAEMA2W93	MPD-A2 96x96 1a to 200 a 440 v without c-t	20	5980



Autoswith & Electronic Overload Relay

Reference	Description	Std pkg (nos)	M.r.p Per unit
SAEATHV01	Three Phase Ambica Autoswitch hv	20	771
SAEATHV02	Three Phase Ambica Autoswitch Variable hv	20	797
SAEATSZ03	Three Phase Ambica Autoswitch Sz5	20	873
SAERE1504	Electronic Overload Relay 2 phase 15 to 50 A	20	1675
SAERE3405	Electronic Overload Relay 2 phase 34 to 200 A	20	1675
SAERE7006	Electronic Overload Relay 2 phase 70 to 300 A	20	1675



Electronic Timer

Reference	Description	Std pkg (nos)	Mrp Per unit
SAETIATS1	Timer Ats-100 Use Ats Star Delta.	10	963
SAETIET01	Timer Et-100 Use Star Delta	10	816



Contactor 3 pole Ae2 440 V

Reference	Description	Std pkg (nos)	Mrp Per unit
SAECO0910	3 Pole Contactor 1D-0910	50	735
SAECO1210	3 Pole Contactor 1D-1210	50	762
SAECO1810	3 Pole Contactor 1D-1810	50	801
SAECO2510	3 Pole Contactor Ae2-2510	50	1250
SAECO3210	3 Pole Contactor Ae2-3210	50	1500
SAECO4011	3 Pole Contactor Ae2-4011	12	2500
SAECO5011	3 Pole Contactor Ae2-5011	12	2750
SAECO6511	3 Pole Contactor Ae2-6511	12	3115
SAECO8011	3 Pole Contactor Ae2-8011	12	4107
SAECO9511	3 Pole Contactor Ae2-9511	12	4399
SAECOF115	3 Pole Contactor Ae2-F115	4	8000
SAECOF150	3 Pole Contactor Ae2-F150	4	8364
SAECOF185	3 Pole Contactor Ae2-F185	4	10925
SAECOF225	3 Pole Contactor Ae2-F225	4	12824
SAECOF265	3 Pole Contactor Ae2-F265	2	14910
SAECOF330	3 Pole Contactor Ae2-F330	2	20910
SAECOF400	3 Pole Contactor Ae2-F400	2	21820
SAECOF500	3 Pole Contactor Ae2-F500	2	27300



Contactor Coil Ae2 440 V

Reference	Description	Std pkg (nos)	Mrp Per unit
SAECOC032	Contactor Coil 440 v Ae2-2510 to 3210	10	550
SAECOCM95	Contactor Coil 440 v Ae2-4011 to 9511	10	817
SAECOC150	Contactor Coil 440 v FF-115/FF-150	10	1917
SAECOC225	Contactor Coil 440 v FG-185/ FG-225	10	2167
SAECOC265	Contactor Coil 440 v FH-265	10	3181
SAECOC330	Contactor Coil 440 v FI-330	10	3455
SAECOC400	Contactor Coil 440 v FJ-400	10	5273
SAECOC500	Contactor Coil 440 v FK-500	10	5820



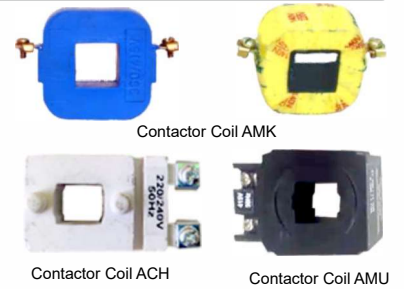
Contactor 3 pole AMU-AMK-ACH 440 V

Reference	Description	Std pkg (nos)	Mrp Per unit
SAEC4BMK1	3 Pole Contactor AMK-2	50	956
SAEC4DMK2	3 Pole Contactor DMK-2	50	1020
SAEC4CH25	3 Pole Contactor ACH-25A	50	1180
SAEC4CH40	3 Pole Contactor ACH-40A	50	1300
SAEC4AMU1	3 Pole Contactor AMU-1	12	1750
SAEC4AMU2	3 Pole Contactor AMU-2	12	2207
SAEC4AMU3	3 Pole Contactor AMU-3	12	2550



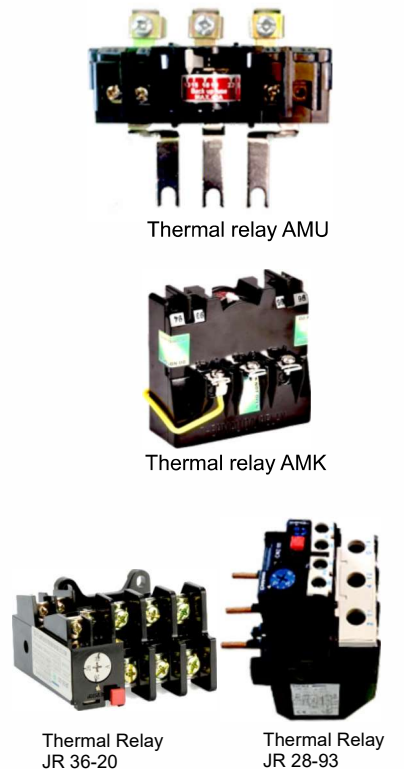
Contactor Coil AMU-ACH-AMU 415 V

Reference	Description	Std pkg (nos)	Mrp Per unit
SAEC4CMMK	Contactor Coil AMK 280 v to 415 v	10	230
SAEC4CHMK	Contactor Coil AMK 140 v to 415 v	10	280
SAEC4CACH	Contactor Coil ACH 280 v to 415 v	10	291
SAEC4CMMU	Contactor Coil AMU 280 v to 415 v	10	490
SAEC4CHMU	Contactor Coil AMU 200 v to 415 v	10	637



Thermal Overload Relay

Reference	Description	Std pkg (nos)	M.r.p Per unit
Thermal Overload Relay AMU			
SAERETU10	Thermal Overload Relay AMU 6 A to 10 A	20	730
SAERETU14	Thermal Overload Relay AMU 9 A to 14 A	20	730
SAERETU24	Thermal Overload Relay AMU 13 A to 21 A	20	730
SAERETU32	Thermal Overload Relay AMU 20 A to 32 A	20	820
SAERETU42	Thermal Overload Relay AMU 28 A to 42 A	20	820
Thermal Overload Relay AMK			
SAERETK06	Thermal Overload Relay AMK 4 A to 6.5 A	20	482
SAERETK10	Thermal Overload Relay AMK 6 A to 10 A	20	482
SAERETK14	Thermal Overload Relay AMK 9 A to 14 A	20	482
SAERETK21	Thermal Overload Relay AMK 13 A to 21 A	20	482
SAERETK32	Thermal Overload Relay AMK 20 A to 32 A	20	570
Thermal Overload Relay JR36-20, JR28-93			
SAERETJ16	Thermal Overload Relay Jr36-20 10 A to 16 A	20	510
SAERETJ22	Thermal Overload Relay Jr36-20 14 A to 22 A	20	510
SAERETJ32	Thermal Overload Relay Jr36-20 20 A to 32 A	20	582
SAERETB32	Thermal Overload Relay Jr28-93 20 A to 32 A	20	1820
SAERETJ50	Thermal Overload Relay Jr28-93 37 A to 50 A	20	1820
SAERETJ65	Thermal Overload Relay Jr28-93 48 A to 65 A	20	1820
SAERETJ80	Thermal Overload Relay Jr28-93 63 A to 80 A	20	1880
SAERETJ93	Thermal Overload Relay Jr28-93 80 A to 93 A	20	1880



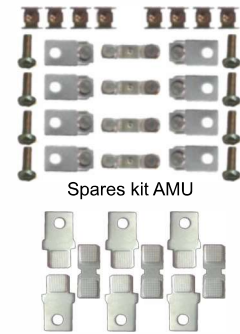
Contactor Spares kit Ae2

Reference	Description	Std pkg (nos)	Mrp Per unit
SAKI04011	Contactor Spares kit Ae2-4011	12	1240
SAKI05011	Contactor Spares kit Ae2-5011	12	1320
SAKI06511	Contactor Spares kit Ae2-6511	12	1500
SAKI08011	Contactor Spares kit Ae2-8011	12	2015
SAKI09511	Contactor Spares kit Ae2-9511	12	2130
SAKI0F150	Contactor Spares kit Ae2-115/150	12	4360
SAKI0F225	Contactor Spares kit Ae2-185/225	12	4796
SAKI0F265	Contactor Spares kit Ae2-265	12	5668
SAKI0F400	Contactor Spares kit Ae2-330/400	12	7848



Contactor Spares kit ACH/AMK/AMU

Reference	Description	Std pkg (nos)	Mrp Per unit
SAKI4AC25	Contactor Spares Kit Ach 4 Pole 25a	12	585
SAKI4AC40	Contactor Spares Kit Ach 4 Pole 40a	12	620
SAKI4AMK1	Contactor Spares Kit Amk -1	12	496
SAKI4AMK2	Contactor Spares Kit Amk -2	12	583
SAKI4AMU1	Contactor Spares Kit AMU-1	12	819
SAKI4AMU2	Contactor Spares Kit AMU-2	12	900
SAKI4AMU3	Contactor Spares Kit AMU-3	12	1092



Contactor Spares

Reference	Description	Std pkg (nos)	Mrp Per unit
Contactor Middle plate			
SAEMID150	Contactor Middle plate F 115/150	12	817
SAEMID225	Contactor Middle plate F 185/225	12	877
SAEMID265	Contactor Middle plate F 265	12	908
SAEMID400	Contactor Middle plate F 330/400	12	1362
SAEMID500	Contactor Middle plate F 500	12	1544
Contactor Top cover			
SAETOP150	Contactor Top cover F 115/150	12	1271
SAETOP225	Contactor Top cover F 185/225	12	1362
SAETOP265	Contactor Top cover F 265	12	1544
SAETOP400	Contactor Top cover F 330/400	12	1950
Contact bridge Bakelite			
SAEBRI501	Contact bridgeBakelite Ae2-4011-5011	12	160
SAEBRI651	Contact bridgeBakelite Ae2-6511	12	180
SAEBRI951	Contact bridgeBakelite Ae2-8011-9511	12	200
SAEBRI150	Contact bridgeBakelite F 115/150	12	835
SAEBRI225	Contact bridgeBakelite F 185/225	12	967
SAEBRI265	Contact bridgeBakelite F 265	12	404
SAEBRI400	Contact bridgeBakelite F 330/400	12	472
SAEBRI500	Contact bridgeBakelite F 500	12	560
Contactor Spares Housing			
SAEHOU050	Contactor Spares Housing Ae4011-5011	10	910
SAEHOU065	Contactor Spares Housing Ae 6511	10	950
SAEHOU095	Contactor Spares Housing Ae 8011-9511	10	980
Coil lock button			
SAELOC225	Coil lock button 115 to 225 4 nos set	50	752
SAELOC265	Coil lock button 115 to 225 4 nos set	50	796



Contactor Middle plate



Contactor Top Cover

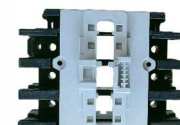


Contact bridgeBakelite 4011 TO 9511



Contact bridgeBakelite 265 to 400

Contact bridgeBakelite 115 a to 225



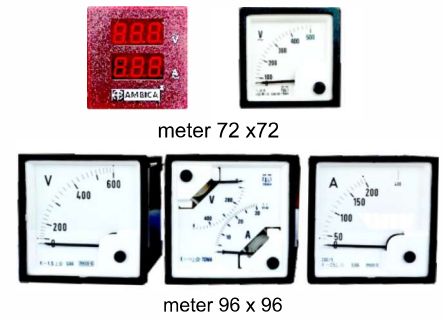
Contactor Spares Housing



Coil lock Button

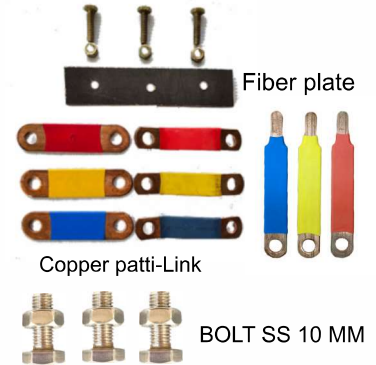
Analog & Digital Meter

Reference	Description	Std pkg (nos)	Mrp Per unit
SAEM9G06V	Analog Meter Mecco G Si 96 600 Volt	50	690
SAEM9G20A	Analog Meter Mecco G Si 96 200/5 am	50	570
SAEM9G15A	Analog Meter Mecco G Si 96 150/5 am	50	570
SAEM9G10A	Analog Meter Mecco G Si 96 100/5 am	50	570
SAEM7G06V	Analog Meter Mecco G Si 72 600 Volt	50	620
SAEM7G60A	Analog Meter Mecco G Si 72 60/5 am	50	490
SATM2I53D	Analog Meter Towa 2in1 Si 96 500 volt + 30a am	50	1022
SAAM2I56C	Analog Meter ambica 2in1 Si 96 500volt + 60/5 am	50	1050
SAAM72IDI	Digital Meter ambica 2in1 Si 72 500volt + 60 am + CT	50	529



Copper Patti-Link

Reference	Description	Std pkg (nos)	Mrp Per unit
SAECP1634	Copper patti 16x3x100 mm set 3 nos (us for 40to100 hp sd)	12	382
SAECP1934	Copper patti 19x3x100 mm set 3 nos (us for 60 hp to100hp dol & 150 hp sd)	12	600
SAECP2534	Copper patti 25x3x100 mm set 3 nos (us for 150to250 hp dol)	12	636
SAECP2554	Copper patti 25x5x100 mm set 3 nos (us for 300to400 hp dol)	12	820
SAECPFIPL	Fiber plate	12	73
SAEBOL10S	Bolt ss 10 mm	12	34



LED Lamp ,Puah Button, Rocker Switch

Reference	Description	Std pkg (nos)	Mrp Per unit
SAEPUARNO	Red Push button AHD NO	12	81
SAEPUARNC	Red Push button AHD NC	12	81
SAEPUAGNO	Green Push button AHD NO	12	81
SAEPUTRNC	Red Push button THF NC	12	50
SAEPUTGNO	Green Push button THF NO	12	50
SAELED22G	Red Indicating lamp LED 22 mm 440 v	12	68
SAELED22R	Green Indicating lamp LED 22 mm 440 v	12	68
SAEROKR16	Rocker Switch	20	110



MCB/MCCB 3 pole

Reference	Description	Std pkg (nos)	Mrp Per unit
SAMCB2032	MCB 32 A 6 KA	20	1050
SAMCC2032	MCCB 32 A 22 KA	20	1849
SAMCC2063	MCCB 63 A 22 KA	20	1849
SAMCC2100	MCCB 100 A 22 kA	16	2477
SAMCC2125	MCCB 125 A 22 kA	16	2477
SAMCC3160	MCCB 160 A 35 kA	12	4050
SAMCC3200	MCCB 200 A 35 kA	12	4300
SAMCC3250	MCCB 250 A 35 kA	12	4417
SAMCC3400	MCCB 400 A 35 kA	4	7970



Auxiliary Contact Block / Selector switch

Reference	Description	Std pkg (nos)	Mrp Per unit
SAMAUAE11	Auxiliary Contact, 1NO-1NC	20	178
SAMAUAE22	Auxiliary Contact, 2 NO 2 NC	20	356
SAMAUAM22	AMU Auxiliary Contact, 1 NO 1 NC	20	210
SAESEAM01	Voltmeter Selector switch	20	272
SAESEVO01	Ammeter Selector Switch	20	455



Single phase Submersible Pump Starters AEC-601-AT

Features

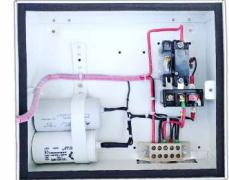
- Voltage: Single Phase 160 V To 220 V Ac 50 Hz.
- Tc Type 1 Pole Contactor (rated Up To 2 Hp).
- Over Load Protection By ACH Thermal Relay.
- Analog Volt & Amp Meter.
- On Led Lamp & ON-OFF Heavy Push Button.
- Include Epcos Start-run Capacitor.
- Metal Enclosure Protects Against Dust, Humidity, And Insects.

Application

- Homes, Submersible Pumps, Bore well Pump, Dairy Farming, Commercials, Hotels.

Product Specification

Reference	Maximum Submersible Pump Rating at 1Ø,220v		Relay Range Amp	Capacitor rating (MFD)		Std Pkg (Nos)	Mrp Per unit
	HP	KW		Run	Start		
AEC601AT05	0.5	0.37	6 a to 10 a	1 x 36	80/100	6	2709
AEC601AT75	0.75	0.57	6 a to 10 a	1 x 45	80/100	6	2745
AEC601AT01	1	0.75	6 a to 10 a	1 x 50	100/120	6	2820
AEC601AT15	1.5	1.1	9 a to 14 a	1 x 60	120/150	6	2936
AEC601AT02	2	1.5	13 a to 21 a	1 x 72	150/200	6	3095



Single phase Submersible Pump Starters AEC-602-DT

Features

- Voltage: Single Phase 160 V To 220 V Ac 50 Hz.
- Tc Type 1 Pole Contactor (rated Up To 2 Hp).
- Over Load Protection By ACH Thermal Relay.
- Digital Volt & Amp Meter.
- On Led Lamp & ON-OFF Heavy Push Button.
- Include Epcos Start-run Capacitor.
- Metal Enclosure Protects Against Dust, Humidity, And Insects.

Application

- Homes, Submersible Pumps, Bore well Pump, Dairy Farming, Commercials, Hotels.

Product Specification

Reference	Maximum Submersible Pump Rating at 1Ø,220v		Relay Range Amp	Capacitor rating (MFD)		Std Pkg (Nos)	Mrp Per unit
	HP	KW		Run	Start		
AEC602DT05	0.5	0.37	6 a to 10 a	1 x 36	80/100	6	2813
AEC602DT75	0.75	0.57	6 a to 10 a	1 x 45	80/100	6	2853
AEC602DT01	1	0.75	6 a to 10 a	1 x 50	100/120	6	2931
AEC602DT15	1.5	1.1	9 a to 14 a	1 x 60	120/150	6	3095
AEC602DT02	2	1.5	13 a to 21 a	1 x 72	150/200	6	3249



Single phase Submersible Pump Starters AEC-603

Features

- Voltage: Single Phase 160 V To 220 V Ac 50 Hz
- Ach Type 2/4 Pole Contactor (rated Up To 3 Hp).
- Over Load Protection By Ach Thermal Relay.
- Analog Volt & Amp Meter.
- On Led Lamp & ON-OFF Heavy Push Button.
- Include Epcos Start-run Capacitor.
- Metal Enclosure Protects Against Dust, Humidity, And Insects.

Application

- Homes, Submersible Pumps, Bore well Pump, Dairy Farming, Commercials, Hotels.

Product Specification

Reference	Maximum Submersible Pump Rating at 1Ø,220v		Relay Range Amp	Capacitor rating (MFD)		Std Pkg (Nos)	Mrp Per unit
	HP	KW		Run	Start		
AEC603A01	1	0.75	6 a to 10 a	1 x 50	100/120	6	3282
AEC603A15	1.5	1.1	9 a to 14 a	1 x 72	120/150	6	3496
AEC603A02	2	1.5	13 a to 21 a	1 x 50 + 1 x 36	120/150	6	3662
AEC603A03	3	2.2	20 a to 32 a	2 x 50	200/250	6	3944
ACH Type Heavy duty 4 pole contactor, 3 pole Overload Relay, Analog voltmeter & AMP meter, LED lamp							
AEC603B02	2	1.5	13 a to 21 a	2 x 36	150/200	6	4507
AEC603D02	2	1.5		2 x 50	200/250	6	4600
AEC603B03	3	2.2	20 a to 32 a	2 x 50	200/250	6	4653
AEC603D03	3	2.2		2 x 50 + 1 x 36	200/250	6	4855



Single phase Submersible Pump Starters AEC-604

Features

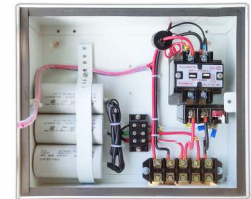
- Voltage: Single Phase 160 V To 220 V Ac 50 Hz.
- Ach Type 2/4 Pole Contactor (rated Up To 3 Hp).
- Over Load Protection By Ach Thermal Relay.
- Digital Volt & Amp Meter.
- On Led Lamp & ON-OFF Heavy Push Button.
- Include Epcos Start-run Capacitor.
- Metal Enclosure Protects Against Dust, Humidity, And Insects.

Application

- Homes, Submersible Pumps, Bore well Pump, Dairy Farming , Commercials, Hotels.

Product Specification

Reference	Maximum Submersible Pump Rating at 1Ø,220v		Relay Range Amp	Capacitor rating (MFD)		Std Pkg (Nos)	Mrp Per unit
	HP	KW		Run	Start		
AEC604A01	1	0.75	6 a to 10 a	1 x 50	100/120	6	3418
AEC604A15	1.5	1.1	9 a to 14 a	1 x 72	120/150	6	3575
AEC604A02	2	1.5	13 a to 21 a	1 x 50 + 1 x 36	120/150	6	3720
AEC604A03	3	2.2	20 a to 32 a	2 x 50	200/250	6	4005
ACH Type Heavy Duty 4 Pole Contactor, 3 Pole Overload Relay, Digital Volt meter & Amp Meter, Led Lamp							
AEC604B02	2	1.5	13 a to 21 a	2 x 36	150/200	6	4542
AEC604D02	2	1.5		2 x 50	200/250	6	4624
AEC604B03	3	2.2	20 a to 32 a	2 x 50	200/250	6	4691
AEC604D03	3	2.2		2 x 50 + 1 x 36	200/250	6	4904



Single phase Submersible Pump Starters AEC-605

Features

- Voltage: Single Phase 160 V To 220 V Ac 50 Hz
- Ach Type 2 Pole Contactor (rated Up To 3 Hp).
- Over Load/short Circuit Protection By Single Pole Mcb.
- Analog Volt & Amp Meter.
- On Led Lamp & ON-OFF Heavy Push Button.
- Include Epcos Start-run Capacitor.
- Metal Enclosure Protects Against Dust, Humidity, And Insects.

Application

- Homes, Submersible Pumps, Bore well Pump, Dairy Farming , Commercials, Hotels.

Product Specification

Reference	Maximum Submersible Pump Rating at 1Ø,220v		MCB Range Amp	Capacitor rating (MFD)		Std Pkg (Nos)	Mrp Per unit
	HP	KW		Run	Start		
AEC605A01	1	0.75	C16	1 x 50	100/120	6	3235
AEC605A15	1.5	1.1	C20	1 x 72	120/150	6	3365
AEC605A02	2	1.5	C25	1 x 50 + 1 x 36	150/200	6	3609
AEC605A03	3	2.2	C32	2 x 50	200/150	6	3773



Single phase Submersible Pump Starters AEC-606

Features

- Voltage: Single Phase 160 V to 220 V AC 50 Hz.
- ACH type 2 Pole contactor (rated up to 3 hp).
- Over load/Short Circuit protection by Single Pole MCB.
- Digital volt & amp meter.
- ON Led Lamp & ON-OFF Heavy push button.
- Include EPCOS Start-Run capacitor.
- Metal enclosure protects against dust, humidity, and insects.

Application

- Homes, Submersible Pumps, Bore well Pump, Dairy Farming , Commercials, Hotels.

Product Specification

Reference	Maximum Submersible Pump Rating at 1Ø,220v		MCB Range Amp	Capacitor rating (MFD)		Std Pkg (Nos)	Mrp Per unit
	HP	KW		Run	Start		
AEC606D01	1	0.75	C16	1 x 50	100/120	6	3285
AEC606D15	1.5	1.1	C20	1 x 72	120/150	6	3424
AEC606D02	2	1.5	C25	1 x 50 + 1 x 36	150/200	6	3673
AEC606D03	3	2.2	C32	2 x 50	200/150	6	3802



Single phase Heavy Submersible Pump Starters AEC-607-HSI

Features

- Voltage: Single Phase 160 V To 220 V Ac 50 Hz.
- Ae2 Type Heavy 3 Pole Contactor (rated Up To 10 Hp).
- Over Load Protection By Mcb & Jr-38 Thermal Relay.
- Analog Volt & Amp Meter.
- On Led Lamp & ON-OFF Heavy Push Button.
- Include Epcos Start-Run Capacitor.
- Metal Enclosure Protects Against Dust, Humidity, And Insects.

Application

- Homes, Submersible Pumps, Bore well Pump, Dairy Farming , Commercials, Hotels.

Product Specification

Reference	Pump Rating at 1Ø,220 v		Relay Range Amp	Contactor Type	Capacitor rating (MFD)		Std Pkg (Nos)	Mrp Per unit
	HP	KW			Run	Start		
AEC607HS3	3	2.2	23 a to 32 a	Ae2-4011	2 x 50	200/250	1	9962
AEC607HS5	5	3.7	37 a to 50 a	Ae2-4011	3 x 50	200/250	1	10193
AEC607HS7	7.5	5.6	37 a to 50 a	Ae2-5011	3 x 72	250/300	1	11015
AEC607HS10	10	7.5	53 a to 85 a	Ae2-9511 AMU-2	Without capacitor	2 x 250/300	1	14256



Two phase Submersible Pump Starters AEC-608-TDA

Features

- Voltage: Two Phase 280 V To 440 V Ac 50 Hz.
- Ach Type 2 Pole Contactor (rated Up To 5 Hp).
- Over Load/ Short Circuit Protection By Single Pole MCB.
- Digital Volt & Amp Meter.
- On Led Lamp & ON-OFF Heavy Push Button.
- Include Epcos Start-run Capacitor.
- Metal Enclosure Protects Against Dust, Humidity, And Insects.

Application

- Homes, Submersible Pumps, Bore well Pump, Dairy Farming , Commercials, Hotels.

Product Specification

Reference	Maximum Submersible Pump Rating at 2Ø,415v		Relay Range Amp	Capacitor rating (MFD)		Std Pkg (Nos)	Mrp Per unit
	HP	KW		Run	Start		
AEC608TDA1	1	0.75	6 a to 10 a	1 x 50	100/120	6	3560
AEC608TDA15	1.5	1.1	9 a to 14 a	1 x 72	120/150	6	3729
AEC608TDA2	2	1.5	13 a to 21 a	1 x 50 + 1 x 36	150/200	6	3836
AEC608TDA3	3	2.2	20 a to 32 a	2 x 50	200/250	6	4207
AEC608TDA5	5	3.7	28 a to 42 a	3 x 50	250/300	6	8907



Single phase Starters AMU-2P AEC-609-PN

Features

- Voltage: Single Phase 160 V To 220 V Ac 50 Hz.
- Ach Type 2 Pole Contactor (rated Up To 5 Hp).
- Over Load Protection By Ach Thermal Relay.
- Digital Volt & Amp Meter.
- ON-OFF Heavy Push Button.
- Metal Enclosure Protects Against Dust, Humidity, And Insects.

Application

- Monoblock Pumps

Product Specification

Reference	Suitable for Pump/Motor Rating at 1Ø, 220 v		Relay Range Amp	Contactor Type	Std Pkg (Nos)	Mrp Per unit
	HP	KW				
AEC609PN1	1	0.75	6 a to 10 a	2P-30	6	2749
AEC609PN2	2	1.5	13 a to 21 a		6	
AEC609PN3	3	2.2	20 a to 32 a		6	
AEC609PN5	5	3.7	28 a to 42 a		6	
				AMU-2		4522

Note: This Panel Is Not Equipped With A Capacitor. This Panel Is Used For Motors That Have Capacitors Installed On Them.

नोट: यह पैनल कैपेसिटर से सुसज्जित नहीं है। इस पैनल का उपयोग उन मोटोर्न के लिए किया जाता है जिन पर कैपेसिटर स्थापित होते हैं।



Two phase Starters AMU-2P AEC-610-P2P

Features

- Voltage: Two Phase 280 V To 440 V Ac 50 Hz
- Ach Type 2 Pole Contactor (rated Up To 5 Hp).
- Over Load Protection By Ach Thermal Relay.
- Digital Volt & Amp Meter.

Application

- Monoblock Pumps

Product Specification

Reference	Suitable for Pump/Motor Rating at 2Ø, 415 v		Relay Range Amp	Contactor Type	Std Pkg (Nos)	Mrp Per unit
	HP	KW				
AEC610P2P1	1	0.75	6 a to 10 a	2P-30	6	2749
AEC610P2P2	2	1.5	13 a to 21 a		6	
AEC610P2P3	3	2.2	20 a to 32 a		6	
AEC610P2P5	5	3.7	28 a to 42 a	AMU-2	6	4522

- ON-OFF Heavy Push Button.
- Metal Enclosure Protects Against Dust, Humidity, And Insects.

Note: This Panel Is Not Equipped With A Capacitor. This Panel Is Used For Motors That Have Capacitors Installed On Them.

नोट: यह पैनल कैपेसिटर से सुसज्जित नहीं है। इस पैनल का उपयोग उन मोटरों के लिए किया जाता है जिन पर कैपेसिटर स्थापित होते हैं।



AMK-1 Single phase Starters AEC-611-BK1

Features

- Voltage: Single Phase 160 V To 220 V Ac 50hz.
- Amk1/2 Type Contactor Used Up To 3Hp.
- Over Load Protection By Amk Thermal Relay.
- Dust, Humidity, And Insects Protection.

Application

- Agriculture, Industrial Area,
- Commercial Area.
- Monoblock Pumps

Product Specification

Reference	Suitable for Pump/Motor Rating at 1Ø, 220 v		Relay Range Amp	Contactor Type	Std Pkg (Nos)	Mrp Per unit
	HP	KW				
AEC611BK1A1	1	0.75	9 a to 14 a	Amk-1	16	1649
AEC611BK1A2	2	1.5	13 a to 21 a		16	
AEC611BK1A3	3	2.2	20 a to 32 a	Amk-2	16	1720



AMK-1 Single phase Starters AEC-612-DM1

Features

- Voltage: Single Phase 160 V To 240 V Ac 50hz.
- Amk1/2 Type Dmc Contactor Used Up To 3 Hp.
- Over Load Protection By Amk Thermal Relay.
- Dust, Humidity, And Insects Protection.

Application

- Agriculture, Industrial Area.
- Commercial Area.
- Monoblock Pumps

Product Specification

Reference	Suitable for Pump/Motor Rating at 1Ø, 220 v		Relay Range Amp	Contactor Type	Std Pkg (Nos)	Mrp Per unit
	HP	KW				
AEC612DM1A1	1	0.75	9 a to 14 a	Amk-1	16	1773
AEC612DM1A2	2	1.5	13 a to 21 a		16	
AEC612DM1A3	3	2.2	20 a to 32 a	Amk-2	16	1842



Smart digital Single phase Pump Starters With Auto+WLC AEC-701-SI

Features

- Voltage: Single Phase 160 V To 220 V Ac 50 Hz.
- Ach Type 2+1 Pole Contactor(rated Up To 5 Hp).
- Ampere Meter And Volt Meter.
- High & Low Voltage Protection.
- Overload & Dry-run Protection.
- Include EPCOS Start-run Capacitor.
- Ac Contactor Operated Fast Switching.
- Adjustable Voltage Range Soft Start/stop Buttons.
- Adjustable Auto Switch Timer.
- Automatic/manual Operation.
- Adjustable Delay Time For Ol-dry Run.
- Adjustable Start Delay Time .
- Long Life And Positive Circuit Interruption.
- Simple Construction And Wiring.
- Wlc Function Available Optional.
- Metal Enclosure Protects Against Dust, Humidity, And Insects.

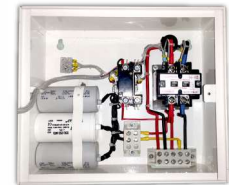
Application

- Homes, Submersible Pumps, Bore well Pump.

Product Specification

Reference	Maximum Submersible Pump Rating at		Relay Range Amp	Contactor Type	Capacitor rating (MFD)		Std Pkg (Nos)	Mrp Per unit
	HP	KW			Run	Start		
AEC701S1	1	0.75	1 a to 50 a Mpd-v4	1 Pole 25 a	1 x 50	100/120	6	4658
AEC701S2	2	1.5		2 pole 32 a	1 x 50 + 1 x 36	150/200	6	5118
AEC701S3	3	2.2		2 pole 40 a	2 x 50	200/250	6	5383
AEC701S5	5	3.7		2 pole 40 a	3 x 50	250/300	6	8602

NOT-Float Switch Charge Extra.



Smart digital Two phase Pump Starters With Auto+WLC AEC-702-T2

Features

- Voltage: Two Phase 280 V To 415 V Ac 50 Hz.
- Ach Type 2+1 Pole Contactor(rated Up To 5 Hp).
- Ampere Meter And Volt Meter.
- High & Low Voltage Protection.
- Overload & Dry-run Protection.
- Include EPCOS Start-run Capacitor.
- Ac Contactor Operated Fast Switching.
- Adjustable Voltage Range Soft Start/stop Buttons.
- Adjustable Auto Switch Timer.
- Automatic/manual Operation.
- Adjustable Delay Time For Ol-dry Run
- Adjustable Start Delay Time.
- Long Life And Positive Circuit Interruption.
- Simple Construction And Wiring.
- Wlc Function Available Optional.
- Metal Enclosure Protects Against Dust, Humidity, And Insects.

Application

- Homes, Submersible Pumps, Bore well Pump.

Product Specification

Reference	Maximum Submersible Pump Rating at 2Ø,415v		Relay Range Amp	Capacitor rating (MFD)		Std Pkg (Nos)	Mrp Per unit
	HP	KW		Run	Start		
AEC702T1	1	0.75	1 a to 50 a Mpd-p2p	1 x 50	100/120	6	5179
AEC702T2	2	1.5		1 x 50 + 1 x 36	150/200	6	5405
AEC702T3	3	2.2		2 x 50	200/250	6	5753
AEC702T5	5	3.7		3 x 50	250/300	6	8982



Smart digital Single phase Pump Starters With Auto+WLC AEC-703-WS

Features

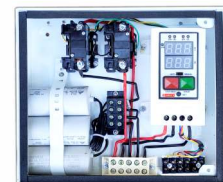
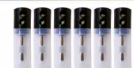
- Voltage: Single Phase 160 V To 220 V Ac 50 Hz.
- Ach Type 2+1 Pole Contactor(rated Up To 3 Hp).
- Ampere Meter And Volt Meter.
- High & Low Voltage Protection.
- Overload & Dry-run Protection.
- Include EPCOS Start-run Capacitor.
- Ac Contactor Operated Fast Switching.
- Adjustable Voltage Range Soft Start/stop Buttons.
- Adjustable Auto Switch Timer.
- Automatic/manual Operation.
- Adjustable Delay Time For Ol-dry Run.
- Adjustable Start Delay Time.
- Long Life And Positive Circuit Interruption.
- Simple Construction And Wiring.
- Fully Automatic Dual Tank Water Level Controller
- Metal Enclosure Protects Against Dust, Humidity, And Insects.

Application

- Homes, Submersible Pumps, Bore well Pump.

Product Specification

Reference	Maximum Submersible Pump Rating at 1Ø,220v		Relay Range Amp	Capacitor rating (MFD)		Std Pkg (Nos)	Mrp Per unit
	HP	KW		Run	Start		
AEC703WS1	1	0.75	1 a to 30 a	1 x 50	100/120	6	5113
AEC703WS15	1.5	1.1		1 x 60	150/200	6	5209
AEC703WS2	2	1.5		1 x 72	150/200	6	5356
AEC703WS3	3	2.2		2 x 50	200/250	6	5647



Smart digital Single phase Pump Starters With Auto AEC-704-PN

Features

- Voltage: Single Phase 160 V To 220 V Ac 50 Hz.
- Ach Type 2 Pole Contactor(rated Up To 5 Hp).
- Ampere Meter And Volt Meter.
- High & Low Voltage Protection.
- Overload & Dry-run Protection.
- Ac Contactor Operated Fast Switching.
- Adjustable Voltage Range Soft Start/stop Buttons.
- Adjustable Auto Switch Timer.

- Automatic/manual Operation.
- Adjustable Delay Time For Ol-dry Run
- Adjustable Start Delay Time.
- Long Life And Positive Circuit Interruption.
- Wlc Function Available Optional.
- Metal Enclosure Protects Against Dust, Humidity, And Insects.

Note: This Panel Is Not Equipped With A Capacitor. This Panel Is Used For Motors That Have Capacitors Installed On Them.

नोट: यह पैनल कैपेसिटर से सुसज्जित नहीं है। इस पैनल का उपयोग उन मोटर्स के लिए किया जाता है जिन पर कैपेसिटर स्थापित होते हैं।

Application

- Monoblock Pumps

Product Specification

Reference	Maximum Submersible Pump Rating at 1Ø,220v		Relay Range Amp	Capacitor rating (MFD)	Std Pkg (Nos)	Mrp Per unit
	HP	KW				
AEC704PN1	1	0.75	1 a to 50 a Mpd-v4	ACH-25	6	3949
AEC704PN2	2	1.5		ACH-25	6	4033
AEC704PN3	3	2.2		ACH-25	6	4033
AEC704PN5	5	3.7		AMU1	6	4689



Smart digital Two phase Pump Starters With Auto AEC-705-P2P

Features

- Voltage: Two Phase 280 V To 415 V Ac 50 Hz.
- Ach Type 2 Pole Contactor(rated Up To 5 Hp).
- Ampere Meter And Volt Meter.
- High & Low Voltage Protection.
- Overload & Dry-run Protection.
- Ac Contactor Operated Fast Switching.
- Adjustable Voltage Range Soft Start/stop Buttons.
- Adjustable Auto Switch Timer.

- Automatic/manual Operation.
- Adjustable Delay Time For Ol-dry Run
- Adjustable Start Delay Time.
- Long Life And Positive Circuit Interruption.
- Wlc Function Available Optional.
- Metal Enclosure Protects Against Dust, Humidity, And Insects.

Note: This Panel Is Not Equipped With A Capacitor. This Panel Is Used For Motors That Have Capacitors Installed On Them.

नोट: यह पैनल कैपेसिटर से सुसज्जित नहीं है। इस पैनल का उपयोग उन मोटर्स के लिए किया जाता है जिन पर कैपेसिटर स्थापित होते हैं।

Application

- Monoblock Pumps

Product Specification

Reference	Maximum Submersible Pump Rating at 2Ø,415v		Relay Range Amp	Capacitor rating (MFD)	Std Pkg (Nos)	Mrp Per unit
	HP	KW				
AEC705P2P1	1	0.75	1 a to 50 a Mpd-v4	ACH-25	6	3998
AEC705P2P2	2	1.5		ACH-25	6	4080
AEC705P2P3	3	2.2		ACH-25	6	4080
AEC705P2P5	5	3.7		AMU1	6	4738



1-2 Pole Contactor

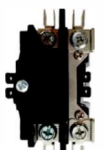
Reference	Description	Std pkg (nos)	Mrp Per unit
SAEC2CH25	1 Pole Contactor ATC - 25 A	25	600
SAEC1CH25	2 Pole Contactor ATC - 25 A	25	800
SAEC2CH16	2 Pole Contactor ACH -16A	25	820
SAEC2CH25	2 Pole Contactor ACH -25A	25	835
SAEC2CH40	2 Pole Contactor ACH -40A	25	870



2 Pole Contactor ACH



2 Pole Contactor ATC



1 Pole Contactor ATC

Connector

Reference	Description	Std pkg (nos)	Mrp Per unit
SABAC60A3	Bakelite Connector 60A-3 Way	16	105
SABAC60A5	Bakelite Connector 60A-5 Way	12	160
SABAC1005	Bakelite Connector 100A-3 Way	8	335
SAPOC32A3	Porcelain Connector 32-3 Way	24	42
SAPOC32A5	Porcelain Connector 32A-5 Way	16	65



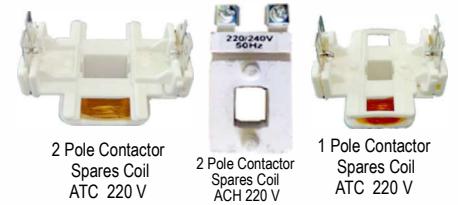
Bakelite Connector



Porcelain Connector

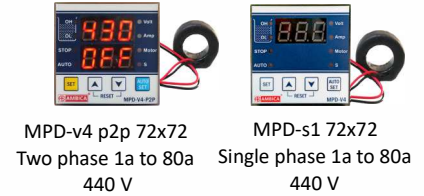
1-2 Pole Contactor Spare Coil

Reference	Description	Std pkg (nos)	Mrp Per unit
SAEC2CACH	2 Pole Contactor Spares Coil ACH 220 V	20	272
SAEC2CATC	2 Pole Contactor Spares Coil ATC 220 V	20	210
SAEC1CATC	1 Pole Contactor Spares Coil ATC 220 V	20	182



Smart Digital Motor Protection Device

Reference	Description	Std pkg (nos)	Mrp Per unit
SAEMS1W71	MPD-S1 72x72 1a to 80a 220 V with 1 nos c-t	12	1770
SAEM2PO72	MPD-v4 p2p 72x72 1a to 80a 440 v with 1 nos c-t	12	1870



Analog & Digital Meter

Reference	Description	Std pkg (nos)	Mrp Per unit
SAEM7L06V	Ambica Analog Meter Si 72 600 Volt	50	210
SAEM7L60A	Ambica Analog Meter Si 72 60/5 am	50	210
SAEM7L30D	Ambica Analog Meter Si 72 30 am	50	210
SAAM72IDI	Ambica Digital Meter 2 in 1 72 500volt + 60 am + CT	50	529



meter 72 x72

Start, Run Capacitors

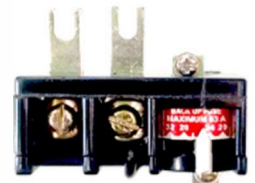
Reference	Description	Std pkg (nos)	Mrp Per unit
SASCAF120	Epcos Start Capacitors 100/120 μF	25	278
SASCAF150	Epcos Start Capacitors 120/150 μF	25	321
SASCAF200	Epcos Start Capacitors 150/200 μF	25	360
SASCAF250	Epcos Start Capacitors 200/250 μF	25	375
SARCAF036	Epcos Run Capacitors 36 μF	25	223
SARCAF050	Epcos Run Capacitors 50 μF	25	260
SARCAF060	Epcos Run Capacitors 60 μF	25	297
SARCAF072	Epcos Run Capacitors 72 μF	25	335



Capacitors

Thermal Overload Relay 2 pole & MCB

Reference	Description	Std pkg (nos)	Mrp Per unit
SAERE2P10	Thermal relay 6 A to 10A	10	381
SAERE2P21	Thermal relay 13 A to 21A	10	381
SAERE2P32	Thermal relay 20 A to 32A	10	395
1 Pole MCB			
SAMCB6S10	1 Pole MCB 6 KA 10 A	12	140
SAMCB6S16	1 Pole MCB 6 KA 16 A	12	140
SAMCB6S20	1 Pole MCB 6 KA 20 A	12	140
SAMCB6S25	1 Pole MCB 6 KA 25 A	12	140
SAMCB6S32	1 Pole MCB 6 KA 32 A	12	140



Thermal relay 2 pole

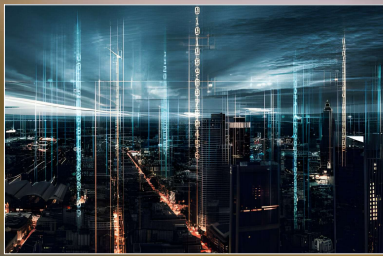


LED Lamp ,Puah Button, Rocker Switch

Reference	Description	Std pkg (nos)	Mrp Per unit
SAEPUARNO	Red Push button AHD NO	12	81
SAEPUARNC	Red Push button AHD NC	12	81
SAEPUAGNO	Green Push button AHD NO	12	81
SAEPUBRNO	Red Push button BF11 NO	12	87
SAEPUBGNC	Green Push button BF01 NC	12	58
SAELED22G	Red Indicating lamp LED 22 mm 440 v	12	68
SAELED22R	Green Indicating lamp LED 22 mm 440 v	12	68
SAETOGR06	2 Position Toggle Switch	20	65



Pushbutton AHD Indicating lamp LED



DOL & Star-Delta

Industrial Electricals Panel

Industrial Control Panels Serve As Vital Nerve Centers, Empowering Industries To Achieve Precision, Efficiency, And Safety In Their Operations. By Integrating Advanced Control And Monitoring Capabilities, These Systems Uphold The Integrity And Productivity Of Modern Industrial Processes.



AMU DOL Starters AEC-751-AMU

Features

- Voltage: Three Phase 280 V to 415 V AC 50Hz.
- AMU1/2/3 type contactor Used up to 15 hp
- Over load protection by AMU thermal relay
- Dust, humidity, and insects protection

Application

- Industrial Area
- Agriculture
- Commercial Area

Product Specification

Reference	Maximum Submersible Pump Rating at 3Ø,415v		Relay Range Amp	Contactor Type	Std Pkg (Nos)	Mrp Per unit
	HP	KW				
AEC751U1A7	7.5	5.5	9 a to 14 a	AMU-1	6	3300
AEC751U1A10	10	7.5	13 a to 21 a	AMU-1	6	
AEC751U2A12	12	9.2	13 a to 21 a	AMU-2	6	3542
AEC751U2A15	15	11.5	20 a to 32 a	AMU-2	6	
AEC751U3A15	15	11.5	20 a to 32 a	AMU-3	6	3920
AEC751U3B15	15	11.5	28 a to 42 a	AMU-3	6	4095



AMU Without Meter Dol Starters AEC-752-G10

Features

- Voltage: Three Phase 280 V to 415 V AC 50Hz.
- AMU 1/2/3 type contactor Used up to 15 hp.
- Over load protection by AMU thermal relay.

- High-low voltage protection, Auto start facility.
- Phase failure and reverse phasing protection.
- Sheet metal Enclosure provides protection against dust, humidity & insects.

Application

- Homes, Submersible Pumps, Bore well Pump.

Product Specification

Reference	Maximum Submersible Pump Rating at 3Ø,415v		Relay Range Amp	Contactor Type	Std Pkg (Nos)	Mrp Per unit
	HP	KW				
AEC752AUT5	5	3.8	9 a to 14 a	AMU-1	6	5553
AEC752AUT7	7.5	5	13 a to 21 a	AMU-2	6	5865
AEC752AUT10	10	7.5	20 a to 32 a	AMU-2	6	6249
AEC752AUT15	15	11.5	28 a to 42 a	AMU-3	6	6549



Three Phase DOL Starters AEC-753-LC1

Features

- Voltage: 3 Phase 280 V to 415 V AC 50Hz.
- Ae 2 type contactor Used up to 40 hp.
- Over load protection by JR-38 & JR-93 thermal relay.

- ON/OFF push button.
- Sheet metal enclosures provide protection against dust, humidity, and insects.

Application

- induction motor

Product Specification

Reference	Maximum Submersible Pump Rating at 3Ø,415v		Relay Range Amp	MCCB Rating (A)	Contactor Type	Std Pkg (Nos)	Mrp Per unit
	HP	KW					
AEC753LC10	10	7.5	12 a to 18 a	NO	Ae2-2510	1	3893
AEC753LC15	15	11.5	17 a to 25 a	NO	Ae2-3210	1	3956
AEC753LC20	20	15	23 a to 32 a	NO	Ae2-5011	1	7911
AEC753LC30	30	23	37a to 50 a	NO	Ae2-8011	1	8922
AEC753LC40	40	30	48 a to 65 a	NO	Ae2-9511	1	9609



AMU SASD Semi Automatic Star Delta AEC-754-SASD

Features

- Voltage: 3 Phase 280 V to 415 V AC 50Hz.
- AMU-2/3 type contactor Used up to 30 hp.
- Over load protection by AMU thermal relay.
- Heavy Connectors For Wire Connections

- Heavy Connectors For Wire Connections
- On/off push button.
- Sheet metal enclosures provide protection against dust, humidity, and insects.

Application

- induction motor

Product Specification

Reference	Maximum Submersible Pump Rating at 3Ø,415v		Relay Range Amp	Contactor Type	Std Pkg (Nos)	Mrp Per unit
	HP	KW				
AEC754U2S12	12	9.2	9 a to 14 a	AMU-2	6	10562
AEC754U2S15	15	11.5	13 a to 21 a	AMU-2	6	
AEC754U3S20	20	15	13 a to 21 a	AMU-3	6	11949
AEC754U3SA30	30	23	20 a to 32 a	AMU-3	6	
AEC754U3SB30	30	23	28 a to 42 a	AMU-3	6	



AMU FASD Fully Automatic Star Delta AEC-754-FASD

Features

- Voltage: 3 Phase 280 V to 415 V AC 50Hz.
- AMU-2/3 type contactor Used up to 30 hp.
- Over load protection by AMU thermal relay.
- Heavy Connectors For Wire Connections
- Et-100 Star delta timer
- ON/OFF push button.
- Sheet metal enclosures provide protection against dust, humidity, and insects.

Application

- induction motor

Product Specification

Reference	Maximum Submersible Pump Rating at 3Ø,415v		Relay Range Amp	MCCB Rating (A)	Contactor Type	Std Pkg (Nos)	Mrp Per unit
	HP	KW					
AEC754U2FS12	12	9.2	9 a to 14 a	NO	AMU-2	6	11582
AEC754U2FS15	15	11.5	13 a to 21 a	NO	AMU-2	6	
AEC754U3FS20	20	15	13 a to 21 a	NO	AMU-3	6	12967
AEC754U3FSA30	30	23	20 a to 32 a	NO	AMU-3	6	
AEC754U3FSB30	30	23	28 a to 42 a	NO	AMU-3	6	



Star delta panel AEC-755-SDT

Features

- Voltage: Three Phase 280 V to 415 V AC 50Hz.
- Ae 2 type contactor Used up to 50 hp
- Over load protection by thermal relay.
- Fully Automatic Et-100 star delta Timer.
- Sheet metal Enclosure provides protection against dust, humidity & insects.

Application

- induction motor

Product Specification

Reference	Maximum Submersible Pump Rating at 3Ø,415v		Relay Range Amp	Contactor Type	Std Pkg (Nos)	Mrp Per unit
	HP	KW				
AEC755SDT17	17	13.7	13 a to 21 a	Ae2-3210-3210-3210	1	10958
AEC755SDT30	30	23	23 a to 32 a	Ae2-4011-4011-4011	1	17260
AEC755SDT40	40	30.7	30 a to 40 a	Ae2-6511-6511-6511	1	20442
AEC755SDT50	50	34.4	37 a to 50 a	Ae2-9511-9511-9511	1	24262



Smart Digital Star delta panel AEC-756-SDM

Features

- Voltage: Three Phase 280 V to 415 V AC 50 Hz
- Ae2 type Heavy duty contactor (rated up to 180 hp)
- Heavy Copper Busbar power connection
- R,Y,B Ampere Meter and R, Y, B Volt Meter
- High/Low Voltage Protection
- Short Circuit Protection
- Overload Protection
- AC Contactor operated Fast Switching
- Inbuilt Current & Volt Unbalance Protection
- Phase Failure & Reverse Phase Protection
- Low Power Consumption & High Load Capacity
- Adjustable overload from 1 to 300 A
- Built-In Adjustable Dry-Run Protection
- Adjustable Voltage Range Soft Start/Stop Buttons
- One Time Relay Bypass Feature
- Adjustable Auto Switch & Star Delta Timer
- Automatic/Manual Operation
- Noise & Vibration Free Operation
- Adjustable Delay Time for OL-Dry Run
- Adjustable Start Delay Time Optional
- Bakelite Terminal Block for Easy Wiring
- Long life and positive circuit interruption
- Simple Construction and Wiring
- WLC Function Available Optional
- Metal enclosure protects against dust, humidity, and insects

Application

- induction motor, Submersible Pumps, Bore well Pump.

Product Specification

Reference	Maximum Submersible Pump Rating at 3Ø,415v		Relay Range Amp	Contactor Type	Std Pkg (Nos)	Mrp Per unit
	HP	KW				
AEC756SDM75	75	57	1 a to 150 a Mpd-a2	Ae2-115-115-9511	1	42580
AEC756SDM90	90	69	1 a to 200 a Mpd-a2	Ae2-150-150-115	1	49662
AEC756SDM125	125	96	1 a to 250 a Mpd-a2	Ae2-185-185-150	1	59149
AEC756SDM150	150	115	1 a to 250 a Mpd-a2	Ae2-225-225-185	1	64967
AEC756SDM180	180	138	1 a to 300 a Mpd-a2	Ae2-265-265-225	1	77489



DOMASTIC PANEL



महत्वपूर्ण

यदि आपकी मोटर दिन में २ घंटे से कम चलती है, तो इस स्टार्टर पैनल का उपयोग किया जा सकता है। लेकिन, यदि आपकी मोटर २ घंटे से अधिक चलती है, जैसे कि खेत या सिंचाई के लिए, तो यह स्टार्टर पैनल उपयोगी नहीं होगा। कंपनी इस पैनल में किसी भी प्रकार की गारंटी या वारंटी प्रदान नहीं करती।

IMPORTANT

The starter panel is beneficial only when your motor operates for less than 2 hours a day. However, it isn't suitable for agricultural or irrigation purposes, where the motor runs continuously for more than 2 hours. Company does not give any kind of guarantee or warranty in these panels.





Three phase DMK-1 DOL AEC-801-ZMK

Features

- Voltage: Three Phase 280 V To 415 V Ac 50hz.
- Amk1 BP Type Contactor Used Up To 7.5 Hp.
- Over Load Protection By Amk Thermal Relay.
- Dust, Humidity, And Insects Protection.

Application

- Homes,
- Submersible Pumps,
- Open well Pump.

Product Specification

Reference	Power rating Sin-Phase Motor 220v AC		Relay & Mcb Range Amp	Contactor Type	Std Pkg (Nos)	Mrp Per unit
	HP	KW				
ZEN801ZMK3	3	2.2	6 a to 10 a	AMK-1	24	1451
ZEN801ZMK5	5	3.7	9 a to 14 a		24	1451
ZEN801ZMK7	7.5	5.7	13 a to 21 a		24	1475



Three phase Pump Starter With Analog Mcb+Relay AEC-802-DOL

Features

- Voltage: 3 Phase 280 V To 415 V Ac 50hz.
- Amk-1 BP Type Contactor Used Up To 5 Hp.
- Over Load Protection By Amk Thermal Relay & Mcb .
- Analog Volt & Amp Meter, On/off Push Button.
- Motor On Led Indication.
- Power Wiring 2 to 3 hp 2.5mm 5 hp 4 mm.

- Metal EnclosureDust, Humidity, And Insects Protection.

Application

- Homes,
- Submersible Pumps,
- Open well Pump.

Product Specification

Reference	Power rating Sin-Phase Motor 220v AC		Relay & Mcb Range Amp	Contactor Type	Std Pkg (Nos)	Mrp Per unit
	HP	KW				
ZEN802DOL2	2	1.5	6 a to 10 a+16a Mcb	AMK-1	10	2936
ZEN802DOL3	3	2.2	9 a to 14 a+20a Mcb		10	2951
ZEN802DOL5	5	3.7	13 a to 21 a+20a Mcb		10	



Three phase Pump Starter With Digital Meter Mcb+Relay AEC-803-DOL

Features

- Voltage: 3 Phase 280 V To 415 V Ac 50hz.
- Amk-1 BP Type Contactor Used Up To 5 Hp.
- Over Load Protection By Amk Thermal Relay & Mcb .
- Digital Volt & Amp Meter, On/off Push Button.
- Power Wiring 2 to 3 hp 2.5mm 5 hp 4 mm.

- Metal EnclosureDust, Humidity, And Insects Protection.

Application

- Homes,
- Submersible Pumps,
- Open well Pump.

Product Specification

Reference	Power rating Sin-Phase Motor 220v AC		Relay & Mcb Range Amp	Contactor Type	Std Pkg (Nos)	Mrp Per unit
	HP	KW				
ZEN803DOL2	2	1.5	6 a to 10 a+16a Mcb	AMK-1	10	3015
ZEN803DOL3	3	2.2	9 a to 14 a+20a Mcb		10	3044
ZEN803DOL5	5	3.7	13 a to 21 a+20a Mcb		10	



Three phase Pump Starter With Autoswitch+Relay AEC-804-DOL

Features

- Voltage: 3 Phase 280 V To 415 V Ac 50hz.
- Amk-1 BP Type Contactor Used Up To 7.5 Hp.
- Over Load Protection By Amk Thermal Relay.
- Inbuilt Auto Switch , On/off Push Button.
- R-y-b Phase Indication By Lamp.
- Power Wiring 2 to 3 hp 2.5mm 5 TO 7.5 hp 4 mm.

- Phase Failure And Reverse Phasing Protection.
- Metal EnclosureDust, Humidity, And Insects Protection.

Application

- Homes,
- Submersible Pumps,
- Open well Pump.

Product Specification

Reference	Power rating Sin-Phase Motor 220v AC		Relay Range Amp	Contactor Type	Std Pkg (Nos)	Mrp Per unit
	HP	KW				
ZEN804DOL3	3	2.2	13 a to 21 a	AMK-1	10	2104
ZEN804DOL5	5	3.7	13 a to 21 a		10	
ZEN804DOL7	7.5	5.7	20 a to 32 a		10	





Regular Openwell Pump Starter Without Meter AEC-901-RO

Features

- Voltage: Single Phase 160 V To 220 V Ac 50 Hz.
- Overload Protection By Isi Marked M.c.b.
- Include EPCOS Run Capacitor.
- Motor On Led Indication.
- Power Wiring 0.5 to 1.5 hp 1.5mm & 2 to 3 hp 2.5mm.
- Metal Enclosure Dust, Humidity, And Insects Protection.

Application

- Homes,
- Submersible Pumps,
- Open well Pump.

Product Specification

Reference	Power rating Sin-Phase Motor 220v AC		MCB Range Amp	Capacitor rating (MFD)		Std Pkg (Nos)	Mrp Per unit
	HP	KW		Run	Start		
ZEN901RO05	0.5	0.37	10 A	1 x 36	NO	24	701
ZEN901RO1	1	0.75	16 A	1 x 50	NO	24	730
ZEN901RO2	2	1.5	20 A	1 x 72	NO	24	805
ZEN901RO3	3	2.2	25 A	2 x 50	NO	24	1052



Regular Openwell Pump Starter Without Meter AEC-902-PRO

Features

- Voltage: Single Phase 160 V To 220 V Ac 50 Hz.
- Overload Protection By Isi Marked M.c.b.
- Include EPCOS Run Capacitor.
- Motor On Led Indication.
- Power Wiring 0.5 to 1.5 hp 1.5mm & 2 hp 2.5mm.
- Plastic Enclosure Dust, Humidity, And Insects Protection.

Application

- Homes,
- Submersible Pumps,
- Open well Pump.

Product Specification

Reference	Power rating Sin-Phase Motor 220v AC		MCB Range Amp	Capacitor rating (MFD)		Std Pkg (Nos)	Mrp Per unit
	HP	KW		Run	Start		
ZEN902PRO05	0.5	0.37	10 A	1 x 36	NO	24	556
ZEN902PRO1	1	0.75	16 A	1 x 50	NO	24	593
ZEN902PRO2	2	1.5	20 A	1 x 72	NO	24	691



Openwell Pump Starter With Amp Meter AEC-903-RO

Features

- Voltage: Single Phase 160 V To 220 V Ac 50 Hz.
- Overload Protection By Isi Marked M.c.b.
- Include EPCOS Run Capacitor.
- Digital Volt & Amp Meter.
- Motor On Led Indication.
- Power Wiring 0.5 to 1.5 hp 1.5mm , 2 to 3 hp 2.5mm
5 hp 4 mm.
- Metal Enclosure Dust, Humidity, And Insects Protection.

Application

- Homes,
- Submersible Pumps,
- Open well Pump.

Product Specification

Reference	Power rating Sin-Phase Motor 220v AC		MCB Range Amp	Capacitor rating (MFD)		Std Pkg (Nos)	Mrp Per unit
	HP	KW		Run	Start		
ZEN903RO05	0.5	0.37	10 A	1 x 36	NO	24	919
ZEN903RO1	1	0.75	16 A	1 x 50	NO	24	948
ZEN903RO2	2	1.5	20 A	1 x 72	NO	24	1030
ZEN903RO3	3	2.2	25 A	2 x 50	NO	24	1206
ZEN903RO5	5	3.7	32 A	2 x 72	NO	24	1361





Openwell Pump Starter With Analog Meter & Mcb AEC-904-AO

Features

- Voltage: Single Phase 160 V To 220 V Ac 50 Hz.
- Overload Protection By Isi Marked M.C.B.
- Include EPCOS Run Capacitor.
- Include Standard Start Capacitor.
- Analog Volt & Amp Meter.
- Start Push Button , Motor On Led Indication.
- Power Wiring 0.5 to 1.5 hp 1.5mm , 2 to 3 hp 2.5mm.
- Metal Enclosure Dust, Humidity, And Insects Protection.

Application

- Homes,
- Submersible Pumps,
- Open well Pump.



Product Specification

Reference	Power rating Sin-Phase Motor 220v AC		MCB Range Amp	Capacitor rating (MFD)		Std Pkg (Nos)	Mrp Per unit
	HP	KW		Run	Start		
ZEN904AO05	0.50	0.37	10 A	1 x 36	120/150	10	1567
ZEN904AO1	1	0.75	16 A	1 x 60	120/150	10	1602
ZEN904AO15	1.5	1.1	20 A	1 x 72	120/150	10	1675
ZEN904AO2	2	1.5	25 A	1 x 72	200/250	10	1720
ZEN904AO3	3	2.2	32 A	2 x 50	200/250	10	1880

Openwell Pump Starter Digital Meter & Mcb AEC-905-DO

Features

- Voltage: Single Phase 160 V To 220 V Ac 50 Hz.
- Overload Protection By Isi Marked M.C.B.
- Include EPCOS Run Capacitor.
- Include Standard Start Capacitor.
- Digital Volt & Amp Meter.
- Start Push Button , Motor On Led Indication.
- Power Wiring 0.5 to 1.5 hp 1.5mm & 2 to 3 hp 2.5mm
- Matel Enclosure Dust, Humidity, And Insects Protection.

Application

- Homes,
- Submersible Pumps,
- Open well Pump.



Product Specification

Reference	Power rating Sin-Phase Motor 220v AC		MCB Range Amp	Capacitor rating (MFD)		Std Pkg (Nos)	Mrp Per unit
	HP	KW		Run	Start		
ZEN905DO05	0.50	0.37	10 A	1 x 36	120/150	10	1715
ZEN905DO1	1	0.75	16 A	1 x 60	120/150	10	1762
ZEN905DO15	1.5	1.1	20 A	1 x 72	120/150	10	1824
ZEN905DO2	2	1.5	25 A	1 x 72	200/250	10	1865
ZEN905DO3	3	2.2	32 A	2 x 50	200/250	10	2025

Single phase Pump Starter Analog Meter & Mcb AEC-906-ACH

Features

- Voltage: Single Phase 160 V To 220 V Ac 50 Hz.
- Ach Type 2 Pole Contactor (rated Up To 2 Hp).
- Overload Protection By Isi Marked M.C.B.
- Include EPCOS Run Capacitor.
- Include Standard Start Capacitor.
- Analog Volt & Amp Meter.
- Start-stop Push Button, Motor On Led Indication.
- Power Wiring 0.5 to 1.5 hp 1.5mm , 2 hp 2.5mm.
- Metal Enclosure Dust, Humidity, And Insects Protection.

Application

- Homes,
- Submersible Pumps,
- Open well Pump.



Product Specification

Reference	Power rating Sin-Phase Motor 220v AC		MCB Range Amp	Capacitor rating (MFD)		Std Pkg (Nos)	Mrp Per unit
	HP	KW		Run	Start		
ZEN906ACH05	0.50	0.37	10 A	1 x 36	120/150	10	2122
ZEN906ACH1	1	0.75	16 A	1 x 60	120/150	10	2173
ZEN906ACH15	1.5	1.1	20 A	1 x 72	120/150	10	2233
ZEN906ACH2	2	1.5	25 A	1 x 72	200/250	10	2278



Single phase Pump Starter Analog Meter & Mcb AEC-907-PCH

Features

- Voltage: Single Phase 160 V To 220 V Ac 50 Hz.
- Ach Type 2 Pole Contactor (rated Up To 2 Hp).
- Overload Protection By Isi Marked M.C.B.
- Include EPCOS Run Capacitor.
- Include Standard Start Capacitor.
- Analog Volt & Amp Meter.
- Start-stop Push Button , Motor On Led Indication.
- Power Wiring 0.5 to 1.5 hp 1.5mm , 2 hp 2.5mm.
- Plastic Enclosure Dust, Humidity, And Insects Protection.

Application

- Homes,
- Submersible Pumps,
- Open well Pump.

Product Specification

Reference	Power rating Sin-Phase Motor 220v AC		MCB Range Amp	Capacitor rating (MFD)		Std Pkg (Nos)	Mrp Per unit
	HP	KW		Run	Start		
ZEN907PCH1	1	0.75	16 A	1 x 60	120/150	10	1945
ZEN907PCH15	1.5	1.1	20 A	1 x 72	120/150	10	2125
ZEN907PCH2	2	1.5	25 A	1 x 72	200/250	10	2267



Single phase Pump Starter With Digital Mcb AEC-908-DM

Features

- Voltage: Single Phase 160 V To 220 V Ac 50 Hz.
- Ach Type 2 Pole Contactor (rated Up To 2 Hp).
- Overload Protection By Isi Marked M.C.B.
- Include EPCOS Run Capacitor.
- Include Standard Start Capacitor.
- Digital Volt & Amp Meter.
- Start-stop Push Button, Motor On Led Indication.
- Power Wiring 0.5 to 1.5 hp 1.5mm , 2 hp 2.5mm.
- Metal Enclosure Dust, Humidity, And Insects Protection.

Application

- Homes,
- Submersible Pumps,
- Open well Pump.

Product Specification

Reference	Power rating Sin-Phase Motor 220v AC		MCB Range Amp	Capacitor rating (MFD)		Std Pkg (Nos)	Mrp Per unit
	HP	KW		Run	Start		
ZEN908DM05	0.50	0.37	10 A	1 x 36	120/150	10	2256
ZEN908DM1	1	0.75	16 A	1 x 60	120/150	10	2291
ZEN908DM15	1.5	1.1	20 A	1 x 72	120/150	10	2353
ZEN908DM2	2	1.5	25 A	1 x 72	200/250	10	2396



Single phase Pump Starter With Analog Relay AEC-909-AR

Features

- Voltage: Single Phase 160 V To 220 V Ac 50 Hz.
- Amk B.P Type 3 Pole Contactor (rated Up To 5 Hp).
- Over Load Protection By Amk Thermal Relay.
- Include EPCOS Run Capacitor.
- Include Standard Start Capacitor.
- Analog Volt & Amp Meter.
- Start-stop Push Button, Motor On Led Indication.
- Power Wiring 0.5 to 1.5 hp 1.5mm , 2 to 3 hp 2.5mm
5 hp 4 mm.
- Metal Enclosure Dust, Humidity, And Insects Protection.

Application

- Homes,
- Submersible Pumps,
- Open well Pump.

Product Specification

Reference	Power rating Sin-Phase Motor 220v AC		Relay Range Amp	Capacitor rating (MFD)		Std Pkg (Nos)	Mrp Per unit
	HP	KW		Run	Start		
ZEN909AR1	1	0.75	6 a to 10 a	1 x 60	120/150	10	2560
ZEN909AR15	1.5	1.1	9 a to 14 a	1 x 72	120/150	10	2625
ZEN909AR2	2	1.5	13 a to 21 a	1 x 72	200/250	10	2715
ZEN909AR3	3	2.2	20 a to 32 a	2 x 50	200/250	10	3100
ZEN909AR5	5	3.7	20 a to 32 a	2 x 72	200/250	10	3504





Single phase Pump Starter With Digital meter + Relay AEC-910-DR

Features

- Voltage: Single Phase 160 V To 220 V Ac 50 Hz.
- Amk B.P Type 3 Pole Contactor (rated Up To 5 Hp).
- Over Load Protection By Amk Thermal Relay.
- Include Epcos Run Capacitor.
- Include Standard Start Capacitor.
- Digital Volt & Amp Meter.
- Start-stop Push Button, Motor On Led Indication.
- Power Wiring 0.5 to 1.5 hp 1.5mm , 2 to 3 hp 2.5mm 5 hp 4 mm.
- Metal Enclosure Dust, Humidity, And Insects Protection.

Application

- Homes,
- Submersible Pumps,
- Open well Pump.

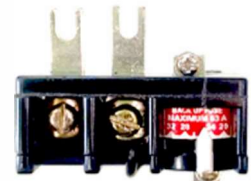


Product Specification

Reference	Power rating		Relay Range Amp	Capacitor rating (MFD)		Std Pkg (Nos)	Mrp Per unit
	Sin-Phase Motor HP	220v AC KW		Run	Start		
ZEN910DR1	1	0.75	6 a to 10 a	1 x 60	120/150	10	2727
ZEN910DR15	1.5	1.1	9 a to 14 a	1 x 72	120/150	10	2829
ZEN910DR2	2	1.5	13 a to 21 a	1 x 72	200/250	10	3071
ZEN910DR3	3	2.2	20 a to 32 a	2 x 50	200/250	10	3376
ZEN910DR5	5	3.7	20 a to 32 a	2 x 72	200/250	10	3645

Thermal Overload Relay 2 pole & MCB

Reference	Description	Std pkg (nos)	Mrp Per unit
SAERE2P10	Thermal relay 6 A to 10A	10	381
SAERE2P21	Thermal relay 13 A to 21A	10	381
SAERE2P32	Thermal relay 20 A to 32A	10	381
1 Pole MCB			
SAMCB6S10	1 Pole MCB 6 KA 10 A	12	140
SAMCB6S16	1 Pole MCB 6 KA 16 A	12	140
SAMCB6S20	1 Pole MCB 6 KA 20 A	12	140
SAMCB6S25	1 Pole MCB 6 KA 25 A	12	140
SAMCB6S32	1 Pole MCB 6 KA 32 A	12	140



Thermal relay 2 pole



LED Lamp ,Puah Button

Reference	Description	Std pkg (nos)	Mrp Per unit
SAEPUTRNC	Red Push button THF NC	12	50
SAEPUTRNO	Green Push button THF NO	12	50
SAEPUBRNO	Red Push button BF11 NO	12	87
SAEPUBGNC	Green Push button BF01 NC	12	58
SAELED22G	Red Indicating lamp LED 22 mm 440 v	12	68
SAELED22R	Green Indicating lamp LED 22 mm 440 v	12	68



Bf01 Nc

Bf11 NO

Push button THF



Indicating lamp LED

Thermal Overload Relay

Reference	Description	Std pkg (nos)	M.r.p Per unit
SAERETK06	Thermal Overload Relay AMK 4 A to 6.5 A	20	520
SAERETK10	Thermal Overload Relay AMK 6 A to 10 A	20	482
SAERETK14	Thermal Overload Relay AMK 9 A to 14 A	20	482
SAERETK21	Thermal Overload Relay AMK 13 A to 21 A	20	482
SAERETK32	Thermal Overload Relay AMK 20 A to 32 A	20	570



Thermal relay AMK

Start, Run Capacitors

Reference	Description	Std pkg (nos)	Mrp Per unit
SASCAL120	Other company Start Capacitors 100/120 μ F	25	125
SASCAL150	Other company Start Capacitors 120/150 μ F	25	129
SASCAL200	Other company Start Capacitors 150/200 μ F	25	173
SASCAL250	Other company Start Capacitors 200/250 μ F	25	235
SARCAF036	Epcos Run Capacitors 36 μ F	25	223
SARCAF050	Epcos Run Capacitors 50 μ F	25	260
SARCAF060	Epcos Run Capacitors 60 μ F	25	297
SARCAF072	Epcos Run Capacitors 72 μ F	25	335



Capacitors

Contactors 2/3 pole

Reference	Description	Std pkg (nos)	Mrp Per unit
SAEC4ZMK1	3 Pole Contactor AMK-2 220 v	50	745
SAEC2ZMK1	3 Pole Contactor AMK-2 440 v	50	745
SAEC4ZH16	2 Pole Contactor ACH-16A 220 v	50	400



Contactor AMK

Analog & Digital Meter

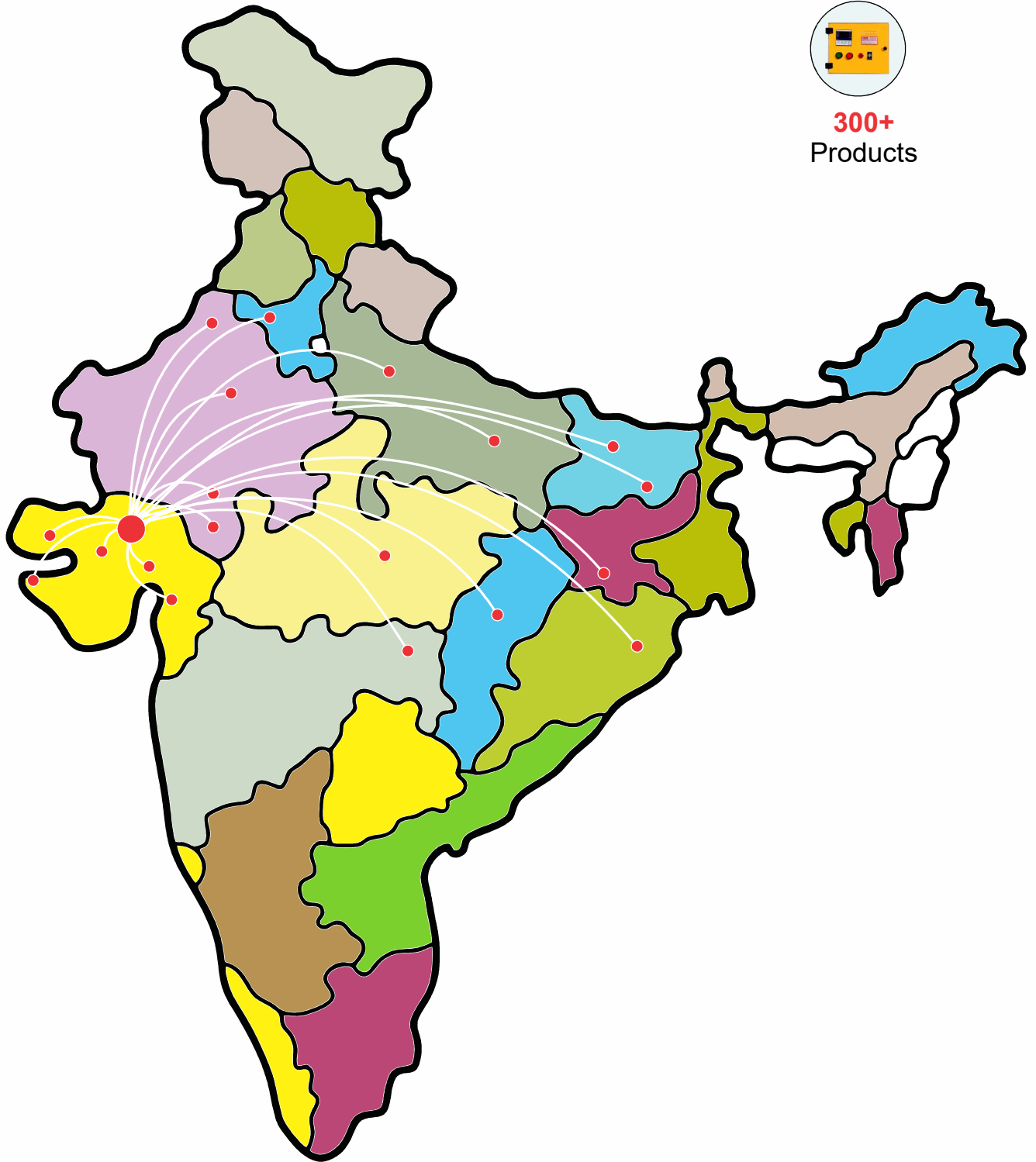
Reference	Description	Std pkg (nos)	Mrp Per unit
SZEMRL30V	Analog meter 72mm round 300 v	50	99
SZEMRL03A	Analog meter 72mm round 30 a	50	99
SZEM7L05V	Analog Meter Si 72 500 Volt	50	153
SZEM7L60A	Analog Meter Si 72 60 am	50	153
SZEM7L30D	Analog Meter Si 72 30 am	50	153
SAAM72IDI	Digital Meter 2 in 1 72 500volt + 60 am + CT	50	529



meter 72 x72



300+
Products



OUR NETWORK IN INDIA

General Terms

- ▶ This price list supersedes all previous price lists.
- ▶ All prices are in Indian Rupees only.
- ▶ All prices are Maximum Retail Prices (MRP) inclusive of GST as applicable.
- ▶ Our discount structure is exclusive of GST.
- ▶ Prices are subject to change without notice. All despatches will be as per prices prevailing on the date of despatch. Prices are ex-godown, exclusive of packing/forwarding/freight and insurance.
- ▶ Product design is subject to change without notice for continuous up gradation.

Warranty Policy

All the products listed in the price list carry a warranty, against manufacturing defects for a period of 12* months from the date of purchase.

Should the product prove to be defective due to faulty workmanship or otherwise, we will remedy the defect or replace the faulty parts or the whole product at our discretion, as soon as possible, free of cost.

The warranty is however subject to the provision of proper usage, efficient maintenance and does not cover defects arising out of fire, accident, inefficient maintenance, faulty operation and willful or accidental damage. It also does not cover damage to power electronic components like thyristors & IGBTs, which fail predominantly due to over-temperature & over-voltage. The user needs to take adequate precautions to eliminate these conditions. The manufacturer shall not be liable for any consequential loss, injury or damages attributable to defect or failure of its products.



WhatsApp QR Code



Instagram QR Code



Facebook QR Code



Website QR Code



YouTube QR Code



Never Compromise In Quality

AMBICA ELECTRICALS (PANEL)

OFFICE:-PLOT NO -103 G.I.D.C DEODAR,B.K GUJARAT PIN-385330

Mo:+91 90991 46731,+91 73591 87176

Mail-sales@ambicapanel.com

Web-www.ambicapanel.com



MSME

MICRO, SMALL & MEDIUM ENTERPRISES
सूक्ष्म, लघु एवं मध्यम उद्यम

OUR STRENGTH • हमारी शक्ति

Ministry of MSME, Govt. of India